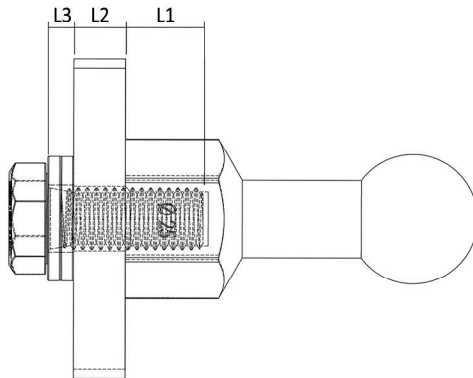


Product Code	Product Name	Max $I_k,1s$	Max $I_k,0.5s$	Devices	Thread	Torque	L1
OTR 20	Ø20 Grounding Ball	23,7 kA	33,51 kA	120mm ²	M12	50-80 Nm	16 mm
OTR 25	Ø25 Grounding Ball	29,6 kA	41,86 kA	150mm ²	M12	50-80 Nm	18 mm
OTR 30	Ø30 Grounding Ball	29,6 kA	41,86 kA	150mm ²	M12	50-80 Nm	18 mm

Short circuit ratings have obtained by using grounding and short-circuiting devices by applying the following points;

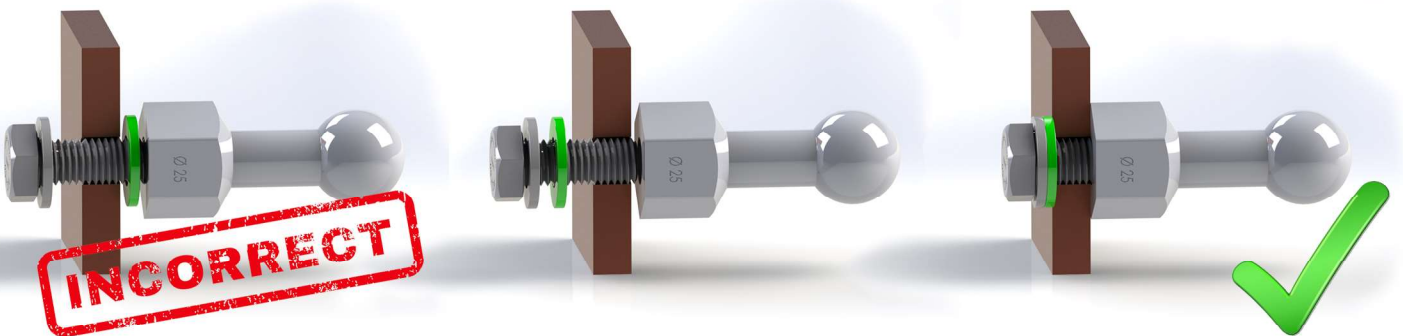
- The contact point must be bare metal and cleaned carefully.
- The proper hole size should be used for grounding studs.
- There should not be burrs around the hole.
- For Aluminium busbars, the pressure plates must be used.
- Recommended torque values have written on above table.
- The screw lengths must be selected for proper installation.



Screw Length = $L1 + L2 + L3$

L2 = Busbar Thickness

L3 = Thickness of spring washer and washer



Koral Ltd Sti
 Guzeller OSB Galvano Koop 2/20
 Gebze / Kocaeli / Turkey
 Phone : +90 262 502 02 64
 Fax : +90 262 502 02 76
 E-mail : koral@koral.com.tr