

ELECTRICAL COMPONENTS

2026
CATALOG



koral.com.tr





koral.com.tr

INDEX | 2026

04 | Cable Lugs



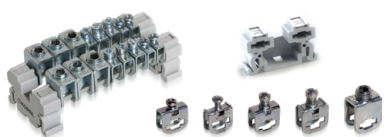
08 | Al/Cu Terminals



14 | Act Series Universal Connectors (Al/Cu)



15 | Pe / N Terminals



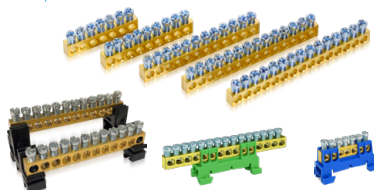
16 | Al/Cu Distribution Blocks



24 | Al/Cu Main Branch Connectors



28 | Brass Connector



30 | Grounding Ball Studs



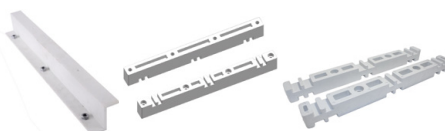
30 | Neutral Grounded Busbar



31 | Low Voltage Standoff Insulators



32 | Busbar Supports



33 | Fiberglass Plates



30 | Cable Holders



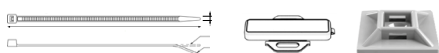
32 | Cable Trunking



34 | Flexible Braided Bars



36 | Cable Tie



37 | Insulated Cord End Terminals



38 | Cable Markers



Tubular Cable Lugs

S Type

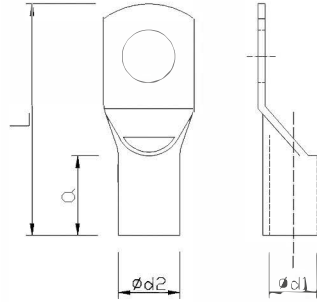


Our cable lugs are manufactured from high-grade **99.95%** electrolytic copper tubes in strict accordance with **EN13600** standards.

Maximum Conductivity: Specially designed for optimum electrical flow and minimal resistance.

Corrosion Protection: Every lug features a high-quality **Tin-Plated** finish, providing excellent resistance to oxidation and ensuring a long service life even in harsh environments.

Cross-sections: Available from **10 mm² to 400 mm²**.



Code	Section Area (mm ²)	Bolt	Inner (d2) (mm)	Outer (d1) (mm)	Length (L) (mm)	Cable Length (a) (mm)	Qty/Pack.
SKP-S10 M5	10	M5	4,5	6	28	11,5	800
SKP-S10 M6		M6	4,5	6	28	11,5	800
SKP-S16 M6	16	M6	5,5	7,5	31,5	12,5	400
SKP-S16 M8		M8	5,5	7,5	31,5	12,5	400
SKP-S25 M8	25	M8	7	9,5	36	15,5	250
SKP-S25 M10		M10	7	9,5	36	15,5	250
SKP-S35 M8	35	M8	8,5	11	41,5	16,5	150
SKP-S35 M10		M10	8,5	11	41,5	16,5	150
SKP-S50 M10	50	M10	10	13	48,5	18	100
SKP-S50 M12		M12	10	13	48,5	18	100
SKP-S70 M10	70	M10	11,5	14,5	51	20	70
SKP-S70 M12		M12	11,5	14,5	51	20	70
SKP-S95 M10	95	M10	13,5	16,5	56,5	22	50
SKP-S95 M12		M12	13,5	16,5	56,5	22	50
SKP-S95 M14		M14	13,5	16,5	56,5	22	50
SKP-S120 M10	120	M10	14,5	18	63	24	40
SKP-S120 M12		M12	14,5	18	63	24	40
SKP-S120 M14		M14	14,5	18	63	24	40
SKP-S150 M10	150	M10	16,5	21	66,5	27	30
SKP-S150 M12		M12	16,5	21	66,5	27	30
SKP-S150 M16		M16	16,5	21	66,5	27	30
SKP-S185 M10	185	M10	18,5	23	77	31	20
SKP-S185 M12		M12	18,5	23	77	31	20
SKP-S185 M16		M16	18,5	23	77	31	20
SKP-S240 M10	240	M10	21	26	84,5	35	20
SKP-S240 M12		M12	21	26	84,5	35	20
SKP-S240 M16		M16	21	26	84,5	35	20
SKP-S300 M12	300	M12	23,5	28,5	95,5	38	16
SKP-S300 M16		M16	23,5	28,5	95,5	38	16
SKP-S400 M12	400	M12	27	33	115	42	6
SKP-S400 M16		M16	27	33	115	42	6

Tubular Cable Lugs

DIN Norm

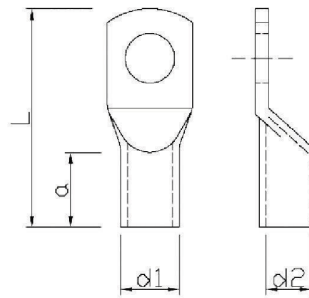


DIN 46235 series cable lugs are manufactured from high-grade **99.95%** electrolytic copper tubes in strict accordance with **EN 13600** standards.

Maximum Conductivity: Specially designed for optimum electrical flow and minimal resistance.

Corrosion Protection: Every lug features a high-quality **Tin-Plated** finish, providing excellent resistance to oxidation and ensuring a long service life even in harsh environments.

Cross-sections: Available from **10 mm² to 300 mm²**.



Code	Section Area (mm ²)	Bolt	Inner (d2) (mm)	Outer (d1) (mm)	Lenght (L) (mm)	Cable Lenght (a) (mm)	Qty/Pack.
SKP-D10 M5	10	M5	4,5	6,00	34	11,5	800
SKP-D16 M6	16	M6	5,5	8,50	43,5	20	400
SKP-D25 M8	25	M8	7	10,00	48	20	250
SKP-D35 M8	35	M8	8,2	12,50	52	20	150
SKP-D50 M10	50	M10	10	14,50	64	28	100
SKP-D70 M10	70	M10	11,5	16,50	67	28	70
SKP-D95 M12	95	M12	13,5	19,00	78	35	50
SKP-D120 M12	120	M12	15,5	21,00	86	35	40
SKP-D150 M12	150	M12	17	23,50	94	35	30
SKP-D185 M12	185	M12	19	25,50	98	40	20
SKP-D240 M12	240	M12	21,5	29,00	108	40	20
SKP-D300 M12	300	M12	24,5	32,00	119	50	16

Standart Type Butt Connectors



Code	Section Area (mm ²)	Inner (d2) (mm)	Outer (d1) (mm)	Lenght (L) (mm)	Qty/Pack.
SEM S 10	10	4,5	6,00	28	600
SEM S 16	16	5,5	7,50	31,5	300
SEM S 25	25	7	9,50	36	200
SEM S 35	35	8,5	11,00	41,5	150
SEM S 50	50	10	13,00	48,5	125
SEM S 70	70	11,5	14,50	51	80
SEM S 95	95	13,5	16,50	56,5	60
SEM S 120	120	14,5	18,00	63	40
SEM S 150	150	16,5	21,00	66,5	30
SEM S 185	185	18,5	23,00	77	20
SEM S 240	240	21	26,00	84,5	15
SEM S 300	300	23,5	28,50	95,5	10

Tubular Cable Lugs

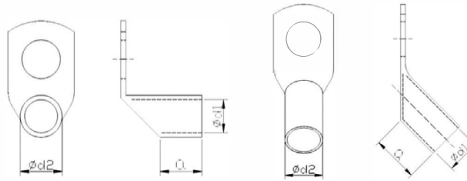
L Type 90°, L1 Type 45°



Every model in this table, from the compact SKP-L-10 to the heavy-duty SKP-L-240, is manufactured to maintain high conductivity and mechanical strength. The use of **99.95%** electrolytic copper combined with **tin-plating** ensures that these dimensions translate into long-term, corrosion-resistant performance.

Comprehensive Sizing: Our inventory supports electrical projects of all scales, offering section areas from **10 mm² up to 240 mm²**.

Versatile Connection Angles: To accommodate tight spaces and complex wiring configurations, lugs are available in both 90° and 45° angles.



L Type 90°

L1 Type 45°



Code	Section Area (mm ²)	Bolt	Inner (d2) (mm)	Outer (d1) (mm)	Length (L) (mm)	Angle
SKP-L-10 M6	10	M6	4,5	6	11,5	90°
SKP-L1-10 M6		M6	4,5	6	11,5	45°
SKP-L-16 M6	16	M6	5,5	7,5	12,5	90°
SKP-L1-16 M6		M6	5,5	7,5	12,5	45°
SKP-L-25 M8	25	M8	7	9,5	15,5	90°
SKP-L1-25 M8		M8	7	9,5	15,5	45°
SKP-L-35 M8	35	M8	8,5	11	16,5	90°
SKP-L1-35 M8		M8	8,5	11	16,5	45°
SKP-L-50 M10	50	M10	10	13	18	90°
SKP-L1-50 M10		M10	10	13	18	45°
SKP-L-70 M10	70	M10	11,5	14,5	20	90°
SKP-L1-70 M10		M10	11,5	14,5	20	45°
SKP-L-95 M12	95	M12	13,5	16,5	22	90°
SKP-L1-95 M12		M12	13,5	16,5	22	45°
SKP-L-120 M12	120	M12	14,5	18	24	90°
SKP-L1-120 M12		M12	14,5	18	24	45°
SKP-L-150 M12	150	M12	16,5	21	27	90°
SKP-L1-150 M12		M12	16,5	21	27	45°
SKP-L-185 M12	185	M12	18,5	23	31	90°
SKP-L1-185 M12		M12	18,5	23	31	45°
SKP-L-240 M12	240	M12	21	26	35	90°
SKP-L1-240 M12		M12	21	26	35	45°

Tubular Cable Lugs

C Type

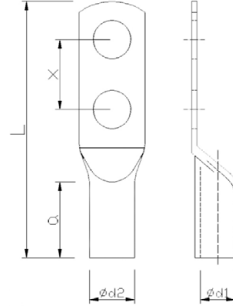


The Koral SKP-C Series is specifically engineered for critical energy projects requiring high current capacity and maximum connection stability. The double-hole design eliminates the risk of terminal rotation and maximizes surface contact area.

Cross-sections: From 16 mm² to 240 mm².

Bolt Sizes: Compatible with M6 through M16 hardware.

Corrosion Resistance: All units come standard with a **tin-plated** finish to ensure long-term protection against oxidation.



Code	Section Area (mm ²)	Bolt	Inner (d2) (mm)	Outer (d1) (mm)	Lenght (L) (mm)	Cable Lenght (a) (mm)	Hole Distance (x)
SKP-C16 M6	16	M6	5,5	7,5	62	20	16
SKP-C16 M8		M8					25
SKP-C25 M8	25	M8	7	9,5	63	15,5	16
SKP-C25 M10		M10					25
SKP-C35 M8	35	M8	8,5	11	81	16,5	16
SKP-C35 M10		M10					25
SKP-C50 M10	50	M10	10	13	81	18	25
SKP-C50 M12		M12					40
SKP-C70 M10	70	M10	11,5	14,50	85	20	25
SKP-C70 M12		M12					40
SKP-C95 M10	95	M10	13,5	16,50	90	22	25
SKP-C95 M14		M14					40
SKP-C120 M10	120	M10	14,5	18,00	103	24	25
SKP-C120 M14		M14					40
SKP-C150 M10	150	M10	16,5	21,00	120	27	25
SKP-C150 M16		M16					40
SKP-C185 M10	185	M10	18,5	23,00	125	31	25
SKP-C185 M16		M16					40
SKP-C240 M10	240	M10	21	26	128	35	25
SKP-C240 M16		M16					40

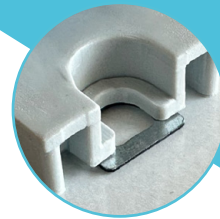
Standards

- EN 60947-7-1:2019
- EN 61238 -1-1:2019 (Class A)



TBA SERIES

Al / Cu Terminals



Open screw fixture allows quick mounting on a plate or DIN rail TS 35.

TBA series of aluminum terminal blocks offers a versatile solution for a wide range of applications, including mechanical engineering, industrial equipment, automation, wind turbines, solar energy, and electrical switchgear.

Designed with aluminum bodies, TBA terminal blocks feature a special coating that makes them compatible with both aluminum and copper conductors.

In addition to enabling secure conductor connections, these terminal blocks are also well-suited for efficient power distribution.

High Torque Capability

Hexagon drive with hex wrench ensures secure and reliable torque transmission.

Compact & Versatile

Designed for use with both copper and aluminum conductors.

Dual-Sided Marking

Clip-in marking slots on both sides of the terminal for easy identification.

Wide Conductor Compatibility

Supports round aluminum and copper conductors from 50 mm² to 300 mm².

Product Benefits

Efficient Design

The optimized aluminum body and compact structure provide cost, weight, and space savings.

Versatile Compatibility

Suitable for round and sector-shaped solid, stranded, or flexible conductors in both copper and aluminum, making it ideal for various industrial and energy applications.

Enhanced Durability

Easy to install and equipped with a metal DIN rail clip, ensuring long-term reliability and superior performance compared to competitors.

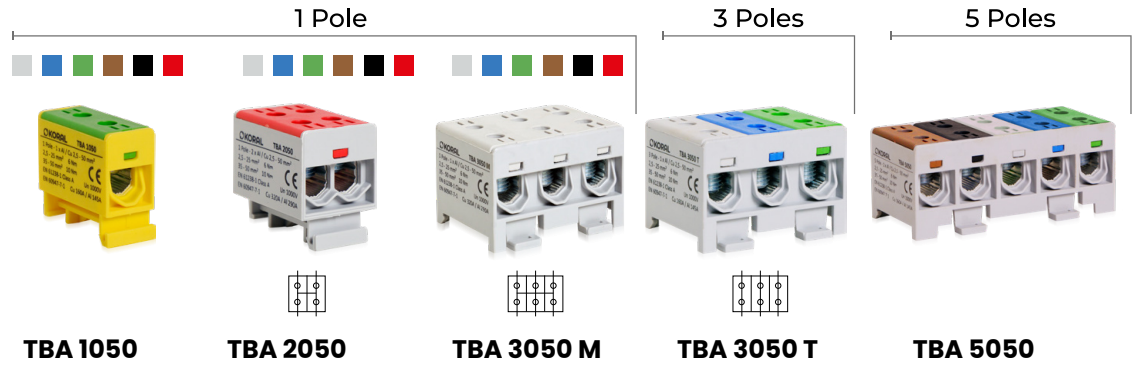
CODE KEY

TBA 1 - 095 - A1



TBA Series

50 mm²

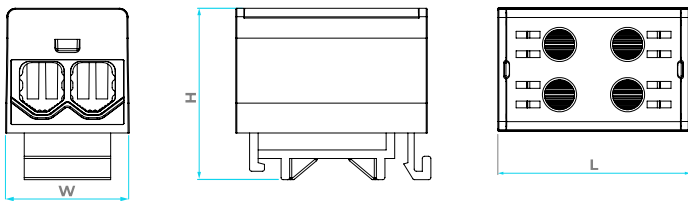


	TBA 1050	TBA 2050	TBA 3050 M	TBA 3050 T	TBA 5050
Grey	TBA 1050A1	TBA 2050A1	TBA 3050MA1	TBA 3050TA1	TBA 5050A1
Blue	TBA 1050A2	TBA 2050A2	TBA 3050MA2	TBA 3050TA2	TBA 5050A2
Green	TBA 1050A3	TBA 2050A3	TBA 3050MA3		TBA 5050A3
Brown	TBA 1050A4	TBA 2050A4	TBA 3050MA4		
Black	TBA 1050A5	TBA 2050A5	TBA 3050MA5		
Red	TBA 1050A6	TBA 2050A6	TBA 3050MA6		

Technical Data

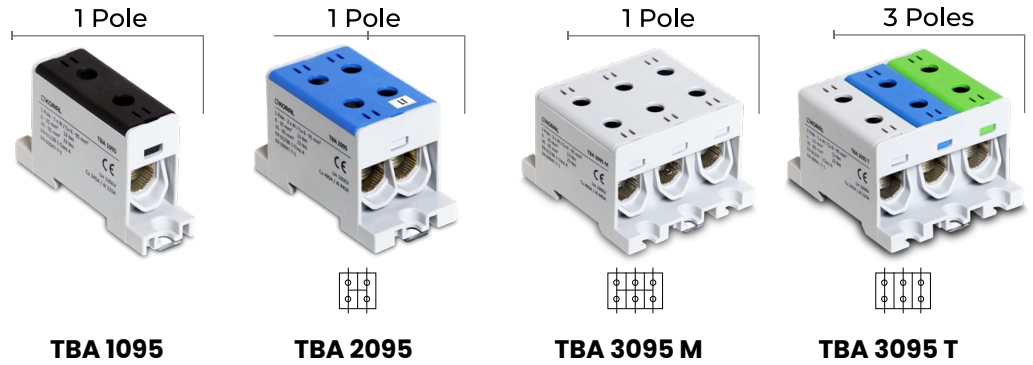
Conductor cross-section Cu, Al (mm ²)	1x2,5 - 50 mm ²	2x2,5 - 50 mm ²	3x2,5 - 50 mm ²	3x2,5 - 50 mm ²	5x2,5 - 50 mm ²
Nominal voltage AC / DC (V)	1000 V AC / 1500 V DC	1000 V AC / 1500 V DC	1000 V AC / 1500 V DC	1000 V AC / 1500 V DC	1000 V AC / 1500 V DC
Nominal current (A)	160 (Cu) / 145 (Al)	320 (Cu) / 290 (Al)	320 (Cu) / 290 (Al)	160 (Cu) / 145 (Al)	160 (Cu) / 145 (Al)
Width / Height / Length (mm)	W 20,2 / H 40,5 / L 45,2	W 29,2 / H 40,5 / L 45,2	W 60 / H 40,5 / L 45,2	W 60 / H 40,5 / L 45,2	W 100 / H 40,5 / L 45,2
Screw, hexagonal key	No. 5	No. 5	No. 5	No. 5	No. 5
Tightening torque (Nm)	1,5 Nm (2,5 - 2,5 mm ²) 5 Nm (4-10 mm ²) 10 Nm (16-50 mm ²)	1,5 Nm (2,5 - 2,5 mm ²) 5 Nm (4-10 mm ²) 10 Nm (16-50 mm ²)	1,5 Nm (2,5 - 2,5 mm ²) 5 Nm (4-10 mm ²) 10 Nm (16-50 mm ²)	1,5 Nm (2,5 - 2,5 mm ²) 5 Nm (4-10 mm ²) 10 Nm (16-50 mm ²)	1,5 Nm (2,5 - 2,5 mm ²) 5 Nm (4-10 mm ²) 10 Nm (16-50 mm ²)
Weight (gr.)	32	54	102	90	150
Box / Carton (pcs)	24 / 216	16 / 144	8 / 72	8 / 72	1 / 50

Dimensions



TBA Series

95 mm²

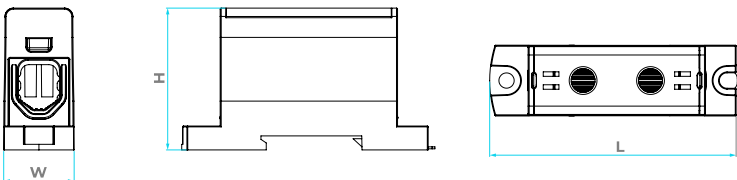


	TBA 1095	TBA 2095	TBA 3095 M	TBA 3095 T
Grey	TBA 1095A1	TBA 2095A1	TBA 3095MA1	TBA 3095TA1
Blue	TBA 1095A2	TBA 2095A2	TBA 3095MA2	TBA 3095TA2
Green	TBA 1095A3	TBA 2095A3	TBA 3095MA3	
Brown	TBA 1095A4	TBA 2095A4	TBA 3095MA4	
Black	TBA 1095A5	TBA 2095A5	TBA 3095MA5	
Red	TBA 1095A6	TBA 2095A6	TBA 3095MA6	

Technical Data

Conductor cross-section Cu, Al (mm ²)	1 x 6 - 95 mm ²	2 x 6 - 95 mm ²	3 x 6 - 95 mm ²	1 x 6 - 95 mm ²
Nominal voltage AC / DC (V)	1000 V AC / 1500 V DC	1000 V AC / 1500 V DC	1000 V AC / 1500 V DC	1000 V AC / 1500 V DC
Nominal current (A)	245 (Cu) / 220 (Al)	490 (Cu) / 440 (Al)	490 (Cu) / 440 (Al)	245 (Cu) / 220 (Al)
Width / Height / Length (mm)	W 25,1 / H 50,7 / L 87,5	W 41,7 / H 50,7 / L 87,5	W 41,7 / H 50,7 / L 87,5	W 25,1 / H 50,7 / L 87,5
Screw, hexagonal key	No. 6	No. 6	No. 6	No. 6
Tightening torque (Nm)	12 Nm (6-25 mm ²), 22 Nm (35-95mm ²)	12 Nm (6-25 mm ²), 22 Nm (35-95mm ²)	12 Nm (6-25 mm ²), 22 Nm (35-95mm ²)	12 Nm (6-25 mm ²), 22 Nm (35-95mm ²)
Weight (gr.)	77	129	251	231
Box / Carton (pcs)	9 / 81	1 / 50	1 / 36	1 / 36

Dimensions

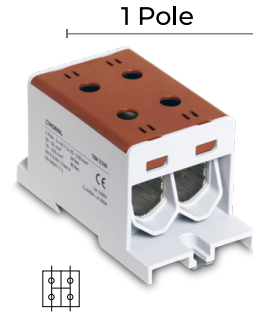


TBA Series

150 mm²



TBA 1150



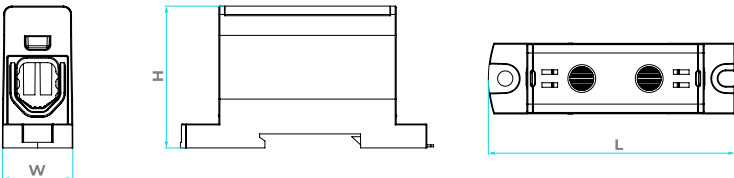
TBA 2150

Grey		TBA 1150A1	TBA 2150A1
Blue		TBA 1150A2	TBA 2150A2
Green		TBA 1150A3	TBA 2150A3
Brown		TBA 1150A4	TBA 2150A4
Black		TBA 1150A5	TBA 2150A5
Red		TBA 1150A6	TBA 2150A6

Technical Data

Conductor cross-section Cu, Al (mm ²)	1 x 25 - 150 mm ²	2 x 25 - 150 mm ²
Nominal voltage AC / DC (V)	1000 V AC / 1500 V DC	1000 V AC / 1500 V DC
Nominal current (A)	320 (Cu) / 290 (Al)	640 (Cu) / 290 (Al)
Width / Height / Length (mm)	W 32 / H 59 / L 115,6	W 57,2 / H 59 / L 115,6
Screw, hexagonal key	No. 8	No. 8
Tightening torque (Nm)	14 Nm (25-50 mm ²), 35 Nm (70-150 mm ²)	14 Nm (25-50 mm ²), 30 Nm (70-150 mm ²)
Weight (gr.)	155	272
Box / Carton (pcs)	1 / 48	1 / 24

Dimensions

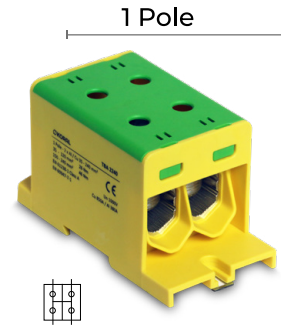


TBA Series

240 mm²



TBA 1240



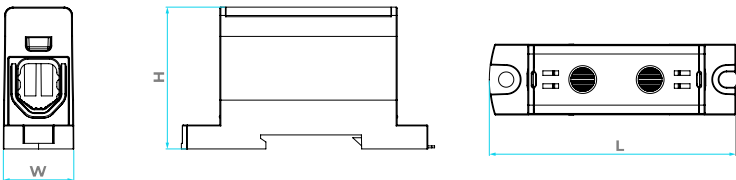
TBA 2240

Grey		TBA 1240A1	TBA 2240A1
Blue		TBA 1240A2	TBA 2240A2
Green		TBA 1240A3	TBA 2240A3
Brown		TBA 1240A4	TBA 2240A4
Black		TBA 1240A5	TBA 2240A5
Red		TBA 1240A6	TBA 2240A6

Technical Data

Conductor cross-section Cu, Al (mm ²)	1x 35 - 240 mm ² 1000 V AC / 1500 V DC	1x 35 - 240 mm ² 1000 V AC / 1500 V DC
Nominal voltage AC / DC (V)	425 (Cu) / 380 (Al)	850 (Cu) / 380 (Al)
Nominal current (A)	W 39 / H 69,9 / L 127	W 61,7 / H 69,9 / L 127
Width / Height / Length (mm)	No. 8	No. 8
Screw, hexagonal key	26 Nm (35-120 mm ²),	26 Nm (35-120 mm ²),
Tightening torque (Nm)	46 Nm (150-240 mm ²)	46 Nm (150-240 mm ²)
Weight (gr.)	226	382
Box / Carton (pcs)	1 / 34	1 / 18

Dimensions



TBA Series

300 mm²



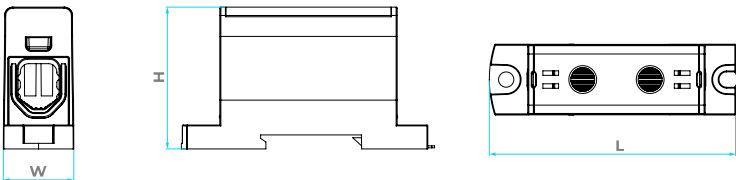
TBA 1300

Grey		TBA 1300A1
Blue		TBA 1300A2
Green		TBA 1300A3
Brown		TBA 1300A4
Black		TBA 1300A5
Red		TBA 1300A6

Technical Data

Conductor cross-section Cu, Al	1 x 95 - 300 mm ²
(mm ²)	1000 V AC / 1500 V DC
Nominal voltage AC / DC (V)	490 (Cu) / 440 (Al)
Nominal current (A)	W 47,5 / H 77,8 / L 148,5
Width / Height / Length (mm)	No. 8
Screw, hexagonal key	30 Nm (95-150 mm ²),
Tightening torque (Nm)	60 Nm (185-300 mm ²)
Weight (gr.)	331
Box / Carton (pcs)	1 / 20

Dimensions

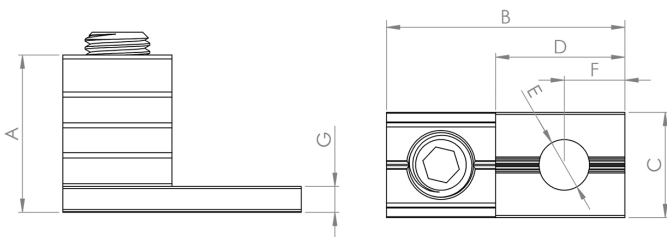


ACT Series

Universal Connectors (Al/Cu)

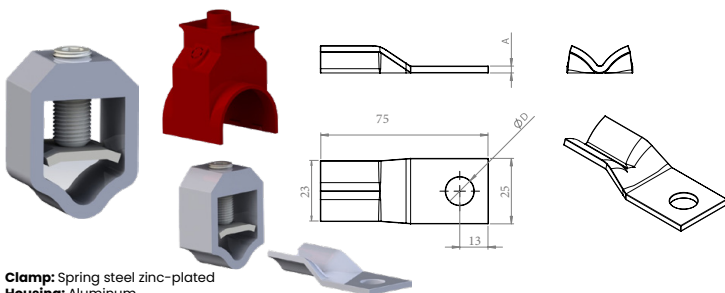


Code	ACT-1050	ACT-2050	ACT-1095	ACT-2095	ACT-1150	ACT-1240	ACT-1300
Product Name	Universal connector 2,5-50 mm ²	Universal connector 2,5-50 mm ²	Universal connector 6-95 mm ²	Universal connector 6-95 mm ²	Universal connector 25-150 mm ²	Universal connector 350-240 mm ²	Universal connector 95-300 mm ²
Nominal Current (IEC)	160 A (Cu) 145 A (Al)	320 A (Cu) 290 A (Al)	245 A (Cu) 220 A (Al)	490 A (Cu) 440 A (Al)	320 A (Cu) 290 A (Al)	425 A (Cu) 380 A (Al)	490 A (Cu) 420 A (Al)
Nominal Voltage (IEC)	690 V	690 V	690 V	690 V	690 V	690 V	690 V
Number of Pole	1	1	1	1	1	1	1
Max.Cross Section	50 mm ²	50 mm ²	95 mm ²	95 mm ²	150 mm ²	240 mm ²	300 mm ²
Tightening torque	3,5 Nm (6-10 mm ²) 12 Nm (16-50 mm ²)	3,5 Nm (6-10 mm ²) 12 Nm (16-50 mm ²)	12 Nm (6-35 mm ²) 22 Nm (50-95 mm ²)	12 Nm (6-35 mm ²) 22 Nm (50-95 mm ²)	14 Nm (25-50 mm ²) 30 Nm (70-150 mm ²)	26 Nm (35-120 mm ²) 40 Nm (150-240 mm ²)	33Nm (95-185 mm ²) 60 Nm (240-300 mm ²)
Weight	10 gr	16 gr	26 gr	44 gr	58 gr	97 gr	141 gr
Max. Operating Temp.	80 °C	80 °C	80 °C	80 °C	80 °C	80 °C	80 °C
Mounting	Aluminium Screw M10	Aluminium Screw M10	Aluminium Screw M14	Aluminium Screw M14	Aluminium Screw M16	Aluminium Screw M20	Aluminium Screw M20
Material	Aluminium	Aluminium	Aluminium	Aluminium	Aluminium	Aluminium	Aluminium
Surface	Tin Plated	Tin Plated	Tin Plated	Tin Plated	Tin Plated	Tin Plated	Tin Plated
Standarts	EN 61238	EN 61238	EN 61238	EN 61238	EN 61238	EN 61238	EN 61238



Code	A (mm)	B (mm)	C (mm)	D (mm)	E (mm)	F (mm)	G (mm)
ACT 1050	21,5	35	14	21	8,5	10	4
ACT 2050	21,5	35	26	21	8,5	10	4
ACT 1095	30	46	20	26	10,5	13	5,4
ACT 2095	30	46	36,6	26	10,5	13	5,4
ACT 1150	38,9	62	26	35	12,5	15	6,4
ACT 1240	44	63	32	35	12,5	16	8,3
ACT 1300	48	64	40	36	12,5	18	10,4

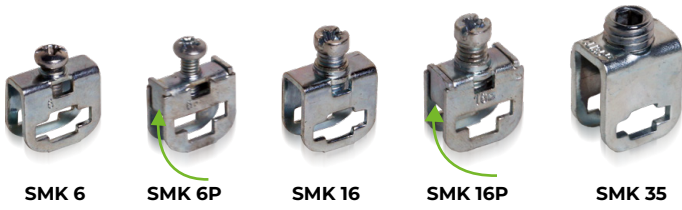
V-Type Universal Connectors (Al/Cu)



Clamp: Spring steel zinc-plated
Housing: Aluminium
Screw: Steel zinc-plated

Code	Nominal Cross-Section (mm ²)	Max Tightening Torque (Nm)	Cross-Section (mm ²)			
			sm	se	rm	re
VK 35-240 SW	120	30	35-185	35-240	25-95	25-120
VK 35-240 COVER Insulating cover for Aluminium "V" Terminal						
Code	A (mm)	D (ø)	Description			
VK 03DI05	3	10,5	Material: Tin-plated copper			
VK 03DI25	3	12,5	Material: Tin-plated copper			
VK 04DI05	4	10,5	Material: Tin-plated copper			
VK 04DI25	4	12,5	Material: Tin-plated copper			
VK 05DI05	5	10,5	Material: Tin-plated copper			
VK 05DI25	5	12,5	Material: Tin-plated copper			
VK 04DI25 30	4	12,5	30° angled			

Busbar Terminal



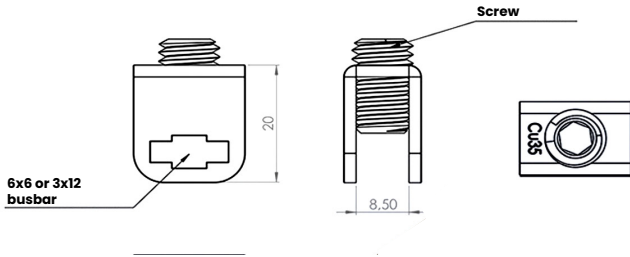
SMK 6

SMK 6P

SMK 16

SMK 16P

SMK 35



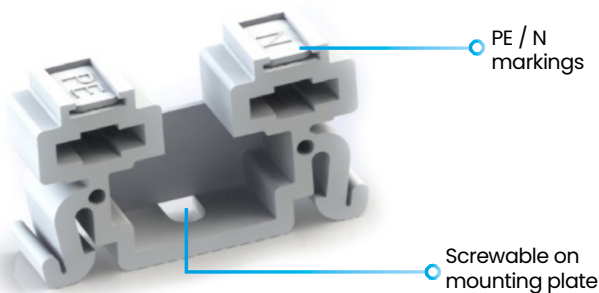
Dekafix Marking
Clip-in marking slots of the terminal for easy identification.

COMING SOON

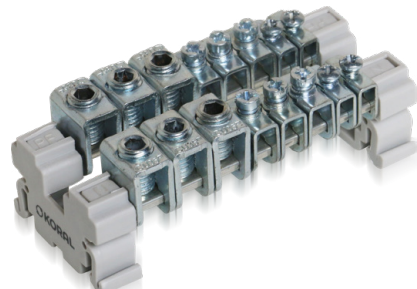
Code	Descriptions	Pcs/Box
SMK 6	6x6 / 3x12 Copper clamps for 6 mm ² cable / M4 screw	350
SMK 6P	6x6 / 3x12 Copper clamps for 6 mm ² cable / M4 screw with pallet	350
SMK 16	6x6 / 3x12 Copper clamps for 16 mm ² cable / M5 screw	300
SMK 16P	6x6 / 3x12 Copper clamps for 16 mm ² cable / M5 screw with pallet	300
SMK 35	6x6 / 3x12 Copper clamps for 35mm ² cable / M10 Hexagon	150

Code	Descriptions	Pcs/Box
SMK1 6	6x6 / 3x12 Copper clamps for 6 mm ² cable / M4 screw with pallet	250
SMK1 16	6x6 / 3x12 Copper clamps for 16 mm ² cable / M5 screw with pallet	200
SMK1 35	6x6 / 3x12 Copper clamps for 35 mm ² cable / Pozidrive screw	100

Busbar Holders



Code	Descriptions	Box
SBT	6x6 / 3x12 Copper holder (Screwable)	60



Code	Descriptions	Box
3x12x1000mm TP	3x12 Copper bar 1 meter (Tin Plated)	15m
3x10x1000mm TP	3x10 Copper bar 1 meter (Tin Plated)	20m

Standards

- EN 60947-7-1:2019
- EN 61238 -1-1:2019 (Class A)



KDB SERIES

Al / Cu Distribution Blocks

The KDB series of distribution blocks offers excellent ease of use, cost-effectiveness, and safety, making it an ideal choice for applications where power needs to be supplied and distributed through conductors with relatively large cross-sections.

Offers three configuration options: Distribute unipolar and multipolar power lines or combine multiple inputs. Can be mounted on a DIN rail or plate, saving up to 50% of rail space compared to conventional copper bars. Reduces assembly time by 80% by eliminating the need for additional fastening and insulating components. Increase the number of outputs by using the optional input and connecting two KDB units together.

Each version in the series is approved for use with both aluminum and copper conductors, thanks to a specialized coating that fully covers the aluminum body of the component.



Product Benefits

Compatible with all solid, stranded, or flexible copper and aluminum conductors, whether round or sector-shaped.

Cost-effective design due to the optimized brass body.

Innovative structure featuring smooth, rounded edges.

Easy installation with a simplified screw mechanism, captive screws integrated into the plastic casing, and no need for brake screws.

Versatile terminal connections, supporting both round and flat conductors.

Flexible installation options, including horizontal, vertical, and customizable stacking configurations using conductor bridges.

KDB SERIES

Applications

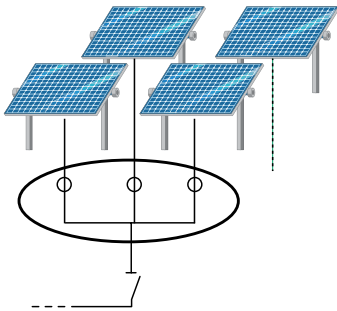
Solar Panels & Wind Turbines



Business & Industrial Automation Panels

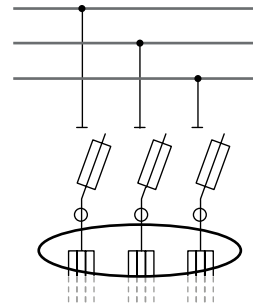


Typical schematic for grouping



1 Product
2 Application

Typical schematic for splitter



Easy
Installation



Space
Savings



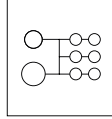
Cost
Effective

KDB Series

Al/Cu Distribution Blocks

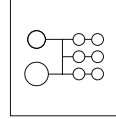
KDB 125A

Single pole
8 connections



KDB 160A

Single pole
8 connections



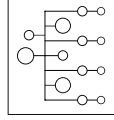
**Designed for panel
or DIN Rail mounting**

Flexible cover:
-Opens Both Ways
-Easy to Attach and Remove

Simple jumpering
Integrate double
connection point

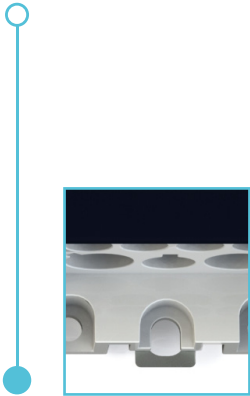
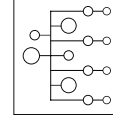
KDB 250A

Single pole
12 connections



KDB 400A

Single pole
12 connections



Effortless Installation

Open screw fixture
allows quick mounting
on a plate or DIN rail TS 35.

One-Side Marking

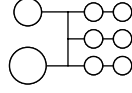
Clip-in marking slots
of the terminal for easy
identification.

All wiring data's and specifications visible from top

KDB Series

KDB 125A

Single pole 8 connections



Description

- Three setup options: distribute single-phase and multi-phase power lines or merge multiple inputs.
- Mount it on Din rail or plate and save up to 50% rail space compared to conventional copper bars
- Reduce the assembly time by 80% by avoiding to use fastening and isolating components
- Simple identification on the flexible cover.

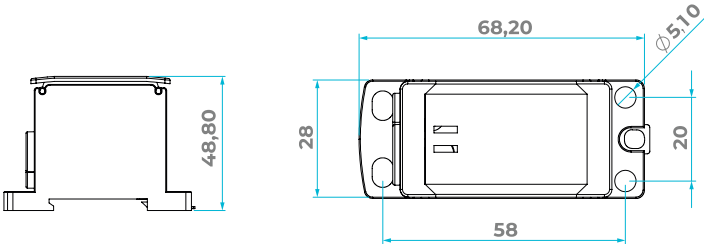
Main technical data

Connecting capacity		IEC EN 60947-7-1
Max current / Max cross section	Copper	125 A / 35 mm ²
	Aluminium	100 A / 35 mm ²
Rated voltage		1000 V AC / 1500 V DC
Cable section		2,5 - 35 mm ²
Weight (gr.)		80,2 gr.
Box / Carton (pcs)		1 / 105

Mounting & wiring instructions

Wire (Max.)	1 x 35 mm ²	7 x 16 mm ²
Tool (Allen)	⬡ No.6	⬡ No.3
Wire stripping length	18 mm	11 mm
Recommended torque	6-10 Nm	2-3 Nm

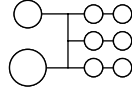
Dimensions



KDB Series

KDB 160A

Single pole 8 connections



Description

- 3 configurations: distribute unipolar and multipolar power lines, or combine several inputs
- Mount it on Din rail or plate and save up to 50% rail space compared to conventional copper bars
- Reduce the assembly time by 80% by avoiding to use fastening and isolating components
- Increase the number of outputs by using the optional input and connecting two DBL together
- Easy identification with the reversible cover and delivered pre-printed markers L1, L2, L3, N, PE, +, -.

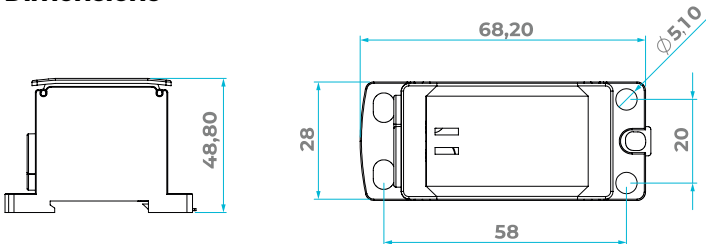
Main technical data

Connecting capacity		IEC EN 60947-7-1
Max current / Max cross section	Copper	160 A / 50 mm ²
	Aluminium	135 A / 50 mm ²
Rated voltage		1000 V AC / 1500 V DC
Cable section		6 - 70 mm ²
Weight (gr.)		82,5 gr.
Box / Carton (pcs)		1 / 105

Mounting & wiring instructions

Wire (Max.)	1 x 70 mm ²	7 x 16 mm ²
Tool (Allen)	⬡ No.5	⬡ No.3
Wire stripping length	18 mm	11 mm
Recommended torque	6-10 Nm	2-3 Nm

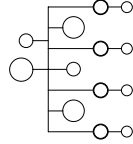
Dimensions



KDB Series

KDB 250A

Single pole 12 connections



Description

- 3 configurations: distribute unipolar and multipolar power lines, or combine several inputs
- Mount it on Din rail or plate and save up to 50% rail space compared to conventional copper bars
- Reduce the assembly time by 80% by avoiding to use fastening and isolating components
- Easy identification with the reversible cover and delivered pre-printed markers L1, L2, L3, N, PE, +, -.

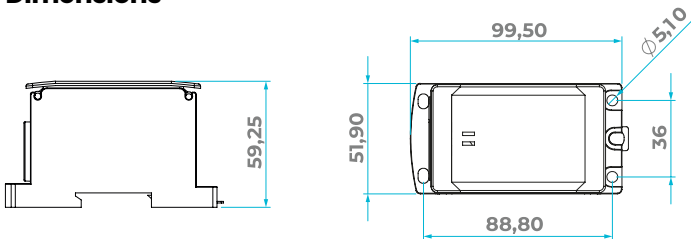
Main technical data

Connecting capacity		IEC EN 60947-7-1
Max current / Max cross section	Copper	250 A / 95 mm ²
	Aluminium	200 A / 95 mm ²
Rated voltage		1000 V AC / 1500 V DC
Cable section		35 x 120 mm ²
Weight (gr.)		260 gr.
Box / Carton (pcs)		1 / 36

Mounting & wiring instructions

Wire (Max.)	1 x 120 mm ²	2 x 35 mm ²	5 x 16 mm ²	4 x 10 mm ²
Tool (Allen)	⬡ No.6	⬡ No.4	⬡ No.3	⬡ No.3
Wire stripping length	28 mm	11 mm	11 mm	11 mm
Recommended torque	25 Nm	3,5 - 5 Nm	3,5 - 5 Nm	2-3 Nm

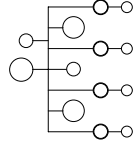
Dimensions



KDB Series

KDB 400A

Single pole 12 connections



Description

- 3 configurations: distribute unipolar and multipolar power lines, or combine several inputs
- Mount it on Din rail or plate and save up to 50% rail space compared to conventional copper bars
- Reduce the assembly time by 80% by avoiding to use fastening and isolating components
- Easy identification with the reversible cover and delivered pre-printed markers L1, L2, L3, N, PE, +, -.

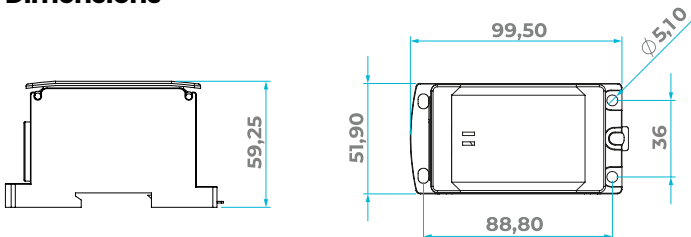
Main technical data

Connecting capacity		IEC EN 60947-7-1
Max current / Max cross section	Copper	400 A / 150 mm ²
	Aluminium	300 A / 150 mm ²
Rated voltage		1000 V AC / 1500 V DC
Cable section		70 - 185 mm ²
Weight (gr.)		258 gr.
Box / Carton (pcs)		1 / 36

Mounting & wiring instructions

Wire (Max.)	1 x 185 mm ²	3 x 35 mm ²	5 x 16 mm ²	4 x 10 mm ²
Tool (Allen)	⬡ No.6	⬡ No.4	⬡ No.3	⬡ No.3
Wire stripping length	28 mm	11 mm	11 mm	11 mm
Recommended torque	25 Nm	3,5 - 5 Nm	3,5 - 5 Nm	2-3 Nm

Dimensions



Standards
• EN 60947-7-1



TBB SERIES

Al / Cu Main
Branch Terminals

TBB series main line branch terminals are the top choice for connecting main supply conductors.

Their advanced brass body design minimizes costs, while simplified screw mounting shortens installation time.

The halogen-free, self-extinguishing plastic casing enhances safety. Identical designs in the 25 mm² and 35 mm² variants allow effortless stacking and combinations.

The TBB series is compatible with solid, stranded, and flexible copper or aluminum conductors—made possible by a specialized triple coating on the brass body.

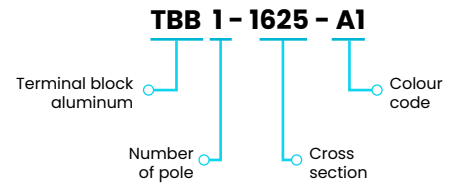
Product Benefits

Compatible with all round and sector-shaped solid, stranded, or flexible copper and aluminum conductors.

Cost-efficient design featuring an optimized brass body and an ultra-compact form.

Built with a halogen-free, self-extinguishing plastic enclosure for improved safety.

CODE KEY



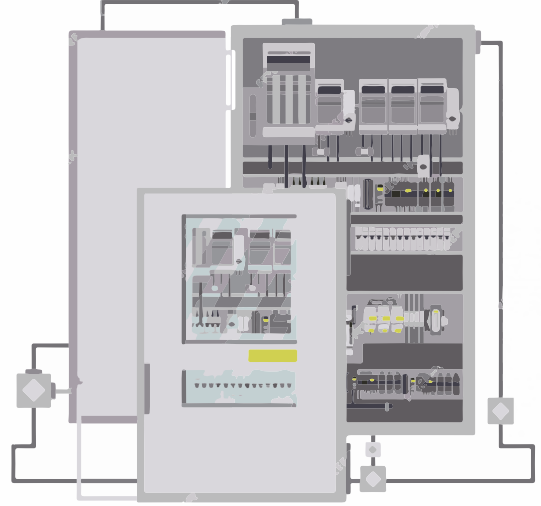
TBB SERIES

Applications

Metering Cabinets



Distribution Boards



Solar Panels



EV Charger Units



TBB Series

Al /Cu Main Branch Terminals



2x16 mm², 2x25 mm²

Cover Colour	Code	Number of Pole	Cross Section (max) Per Pole	Torque	Nominal Current (A)	Nominal Voltage (V)	Box/Carton (pcs)	Weight (gr)
Grey	TBB 11625A1	1	2x16 mm ² , 2x25 mm ²	2,5-2 Nm	130 (Cu), 100 (A)	1000 V AC / DC	24/216	57
Blue	TBB 11625A2	1	2x16 mm ² , 2x25 mm ²	2,5-2 Nm	130 (Cu), 100 (A)	1000 V AC / DC	24/216	57
Green	TBB 11625A3	1	2x16 mm ² , 2x25 mm ²	2,5-2 Nm	130 (Cu), 100 (A)	1000 V AC / DC	24/216	57
Brown	TBB 11625A4	1	2x16 mm ² , 2x25 mm ²	2,5-2 Nm	130 (Cu), 100 (A)	1000 V AC / DC	24/216	57
Black	TBB 11625A5	1	2x16 mm ² , 2x25 mm ²	2,5-2 Nm	130 (Cu), 100 (A)	1000 V AC / DC	24/216	57
Red	TBB 11625A6	1	2x16 mm ² , 2x25 mm ²	2,5-2 Nm	130 (Cu), 100 (A)	1000 V AC / DC	24/216	57

Conductor cross section Cu /Al (mm²) 1,5 - 25



2x25 mm², 2x25 mm²

Cover Colour	Code	Number of Pole	Cross Section (max) Per Pole	Torque	Nominal Current (A)	Nominal Voltage (V)	Box/Carton (pcs)	Weight (gr)
Grey	TBB 12525A1	1	2x25 mm ² , 2x25 mm ²	2,5-2 Nm	130 (Cu), 100 (A)	1000 V AC / DC	24/216	53
Blue	TBB 12525A2	1	2x25 mm ² , 2x25 mm ²	2,5-2 Nm	130 (Cu), 100 (A)	1000 V AC / DC	24/216	53
Green	TBB 12525A3	1	2x25 mm ² , 2x25 mm ²	2,5-2 Nm	130 (Cu), 100 (A)	1000 V AC / DC	24/216	53
Brown	TBB 12525A4	1	2x25 mm ² , 2x25 mm ²	2,5-2 Nm	130 (Cu), 100 (A)	1000 V AC / DC	24/216	53
Black	TBB 12525A5	1	2x25 mm ² , 2x25 mm ²	2,5-2 Nm	130 (Cu), 100 (A)	1000 V AC / DC	24/216	53
Red	TBB 12525A6	1	2x25 mm ² , 2x25 mm ²	2,5-2 Nm	130 (Cu), 100 (A)	1000 V AC / DC	24/216	53

Conductor cross section Cu /Al (mm²) 1,5 - 25

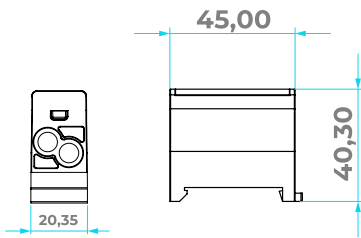


2x25 mm², 2x35 mm²

Cover Colour	Code	Number of Pole	Cross Section (max) Per Pole	Torque	Nominal Current (A)	Nominal Voltage (V)	Box/Carton (pcs)	Weight (gr)
Grey	TBB 13525A1	1	2x25 mm ² , 2x35 mm ²	2,5-3 Nm	160 (Cu), 125 (A)	1000 V AC / DC	24/216	50
Blue	TBB 13525A2	1	2x25 mm ² , 2x35 mm ²	2,5-3 Nm	160 (Cu), 125 (A)	1000 V AC / DC	24/216	50
Green	TBB 13525A3	1	2x25 mm ² , 2x35 mm ²	2,5-3 Nm	160 (Cu), 125 (A)	1000 V AC / DC	24/216	50
Brown	TBB 13525A4	1	2x25 mm ² , 2x35 mm ²	2,5-3 Nm	160 (Cu), 125 (A)	1000 V AC / DC	24/216	50
Black	TBB 13525A5	1	2x25 mm ² , 2x35 mm ²	2,5-3 Nm	160 (Cu), 125 (A)	1000 V AC / DC	24/216	50
Red	TBB 13525A6	1	2x25 mm ² , 2x35 mm ²	2,5-3 Nm	160 (Cu), 125 (A)	1000 V AC / DC	24/216	50

Conductor cross section Cu /Al (mm²) 1,5 - 35

Dimensions



TBB Series

Al /Cu Main Branch Terminals



2x16 mm², 2x25 mm²

Cover Colour	Code	Number of Pole	Cross Section (max) Per Pole	Torque	Nominal Current (A)	Nominal Voltage (V)	Box/Carton (pcs)	Weight (gr)
□ □ □ □ □	TBB 51625A1	5	2x16 mm ² , 2x25 mm ²	2,5-2 Nm	130 (Cu), 100 (Al)	1000 V AC / DC	1/50	295 gr.
□ □ □ □ □	TBB 51625A2	5	2x16 mm ² , 2x25 mm ²	2,5-2 Nm	130 (Cu), 100 (Al)	1000 V AC / DC	1/50	295 gr.
□ □ □ □ □	TBB 51625A3	5	2x16 mm ² , 2x25 mm ²	2,5-2 Nm	130 (Cu), 100 (Al)	1000 V AC / DC	1/50	295 gr.

Conductor cross section Cu /Al (mm²) 1,5 - 25

2x25 mm², 2x25 mm²

Cover Colour	Code	Number of Pole	Cross Section (max) Per Pole	Torque	Nominal Current (A)	Nominal Voltage (V)	Box/Carton (pcs)	Weight (gr)
□ □ □ □ □	TBB 52525A1	5	2x25 mm ² , 2x25 mm ²	2,5-2 Nm	130 (Cu), 100 (Al)	1000 V AC / DC	1/50	275 gr.
□ □ □ □ □	TBB 52525A2	5	2x25 mm ² , 2x25 mm ²	2,5-2 Nm	130 (Cu), 100 (Al)	1000 V AC / DC	1/50	275 gr.
□ □ □ □ □	TBB 52525A3	5	2x25 mm ² , 2x25 mm ²	2,5-2 Nm	130 (Cu), 100 (Al)	1000 V AC / DC	1/50	275 gr.

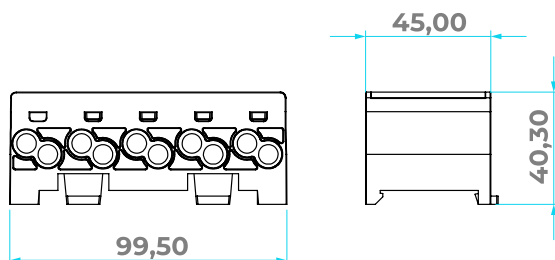
Conductor cross section Cu /Al (mm²) 1,5 - 25

2x25 mm², 2x35 mm²

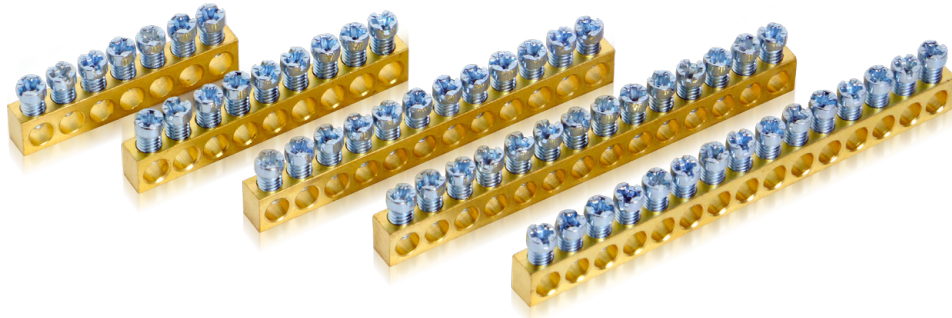
Cover Colour	Code	Number of Pole	Cross Section (max) Per Pole	Torque	Nominal Current (A)	Nominal Voltage (V)	Box/Carton (pcs)	Weight (gr)
□ □ □ □ □	TBB 53525A1	5	2x25 mm ² , 2x35 mm ²	2,5-3 Nm	160 (Cu), 125 (Al)	1000 V AC / DC	1/50	260 gr.
□ □ □ □ □	TBB 53525A2	5	2x25 mm ² , 2x35 mm ²	2,5-3 Nm	160 (Cu), 125 (Al)	1000 V AC / DC	1/50	260 gr.
□ □ □ □ □	TBB 53525A3	5	2x25 mm ² , 2x35 mm ²	2,5-3 Nm	160 (Cu), 125 (Al)	1000 V AC / DC	1/50	260 gr.

Conductor cross section Cu /Al (mm²) 1,5 - 35

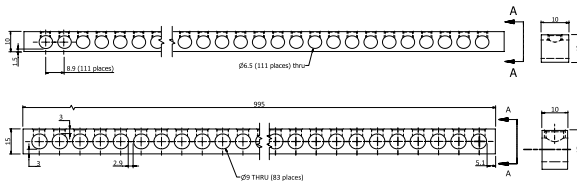
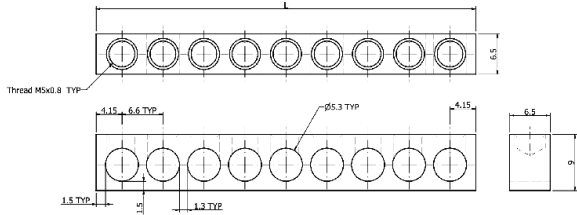
Dimensions



Slotted Grounded Panel Terminal Connectors 80 A (6.5 X 9 mm²)



* Custom production available upon request.



Code	Holes	Hole Diameter	Cable Section	Length (mm)	Box (pcs)	Weight (gr)
SB M56590 007	7 Holes	5,3	1,5 - 16mm ²	47.90	100	21
SB M56590 009	9 Holes	5,3	1,5 - 16mm ²	61.10	70	27
SB M56590 012	12 Holes	5,3	1,5 - 16mm ²	80.90	60	36
SB M56590 014	14 Holes	5,3	1,5 - 16mm ²	94.10	50	42
SB M56590 015	15 Holes	5,3	1,5 - 16mm ²	100.70	50	45
SB M56590 024	24 Holes	5,3	1,5 - 16mm ²	160.10	30	71
SB M56590 032	32 Holes	5,3	1,5 - 16mm ²	212.90	20	95
SB M56590 042	42 Holes	5,3	1,5 - 16mm ²	278.90	15	124
SB M56590 052	52 Holes	5,3	1,5 - 16mm ²	344.90	15	154
SB M56590 147	147 Holes	5,3	1,5 - 16mm ²	971.90	30	441

SB M51010 111	111 Holes	6,5	1,5 - 25mm ²	1000	25	634
---------------	-----------	-----	-------------------------	------	----	-----

Holes are suitable for 25mm² cables, 100A

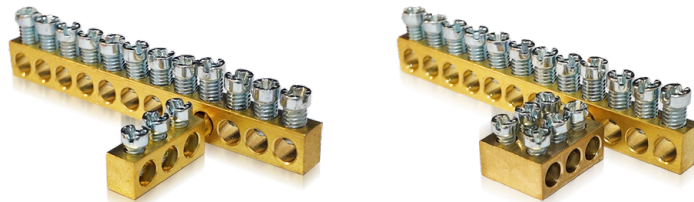
SB M81015 083	83 Holes	9	1,5 - 35mm ²	995	15	1080
---------------	----------	---	-------------------------	-----	----	------

Holes are suitable for 35mm² cables, 160A

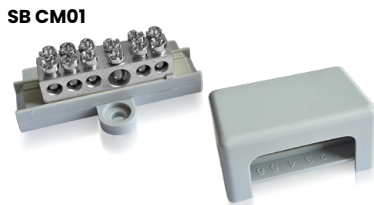


16mm ² Cable, 80 amp, 3x16mm ²						
Code	Width (mm)	Height (mm)	Length (mm)	Tightening torque (Nm)	Weight (gr)	Box pcs
SB 3 PIN	8	16	35	2,5	10	200

16mm ² Cable, 80 amp, 6x16mm ²						
Code	Width (mm)	Height (mm)	Length (mm)	Tightening torque (Nm)	Weight (gr)	Box pcs
SB 6 PIN	16	16	33	2,5	18	100



Equipotential Busbar



Code	Descriptions	Material	Inputs	Sections		Carton / Box (pcs)	Weight (gr)
				Busbar (mm)	Wires (mm ²)		
SB CM01	Equipotential terminal 6 holes with cap	Nickel-plated brass	1	30x4	∅ (8-10)	1/40	52
			5		50		
SB CB01	Equipotential terminal 7 holes with double screws	Brass	1	30x4	∅ (8-10)	1/35	215
			1		50		
			7		(6-25)		

PE / N Brass Terminals

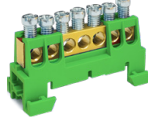
SBB1 A1 - 007



SBB1 - A2 007



SBB1 - A3 007



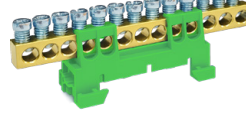
SBB1 A1 - 012



SBB1 A2 - 012



SBB1 A3 - 012



SBB A1 - 015



SBB A2 - 015



SBB A3 - 015



Code	Descriptions	Cable Section	Torque (Nm)	Nominal Current (A)	Nominal Voltage (v)	Weight (gr)	Box pcs.
SBB1 A1 - 007	6,5x9mm ² 7 holes brass M5 / Black	1,5 - 16mm ²	2,5	80	690	25	10
SBB1 A2 - 007	6,5x9mm ² 7 holes brass M5 / Blue	1,5 - 16mm ²	2,5	80	690	25	10
SBB1 A3 - 007	6,5x9mm ² 7 holes brass M5 / Green	1,5 - 16mm ²	2,5	80	690	25	10
SBB1 A1 - 012	6,5x9mm ² 12 holes brass M5 / Black	1,5 - 16mm ²	2,5	80	690	40	10
SBB1 A2 - 012	6,5x9mm ² 12 holes brass M5 / Blue	1,5 - 16mm ²	2,5	80	690	40	10
SBB1 A3 - 012	6,5x9mm ² 12 holes brass M5 / Green	1,5 - 16mm ²	2,5	80	690	40	10
SBB1 A1 - 015	6,5x9mm ² 15 holes brass M5 / Black	1,5 - 16mm ²	2,5	80	690	49	10
SBB1 A2 - 015	6,5x9mm ² 15 holes brass M5 / Blue	1,5 - 16mm ²	2,5	80	690	49	10
SBB1 A3 - 015	6,5x9mm ² 15 holes brass M5 / Green	1,5 - 16mm ²	2,5	80	690	49	10

SBB2 A1 - 007



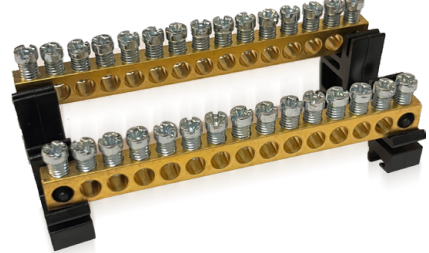
Ready to use

SBB2 A1 - 009



Ready to use

SBB2 A1 - 014



Ready to use

Code	Descriptions	Cable Section	Torque (Nm)	Nominal Current (A)	Nominal Voltage (v)	Weight (gr)	Box pcs.
SBB2 A1 - 007	2x(6,5x9mm ²) 7 holes brass M5	1,5 - 16mm ²	2,5	80	690	50	10
SBB2 A1 - 009	2x(6,5x9mm ²) 9 holes brass M5	1,5 - 16mm ²	2,5	80	690	62	10
SBB2 A1 - 014	2x(6,5x9mm ²) 14 holes brass M5	1,5 - 16mm ²	2,5	80	690	92	10
SBB2 A1 - 024	2x(6,5x9mm ²) 24 holes brass M5	1,5 - 16mm ²	2,5	80	690	150	10
SBB2 A1 - 032	2x(6,5x9mm ²) 32 holes brass M5	1,5 - 16mm ²	2,5	80	690	198	10
SBB2 A1 - 042	2x(6,5x9mm ²) 42 holes brass M5	1,5 - 16mm ²	2,5	80	690	256	10
SBB2 A1 - 052	2x(6,5x9mm ²) 52 holes brass M5	1,5 - 16mm ²	2,5	80	690	316	10

SBB2 A1



SBB2 A2



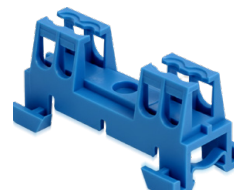
SBB2 A3



SBB1 A1



SBB1 A2



SBB1 A3

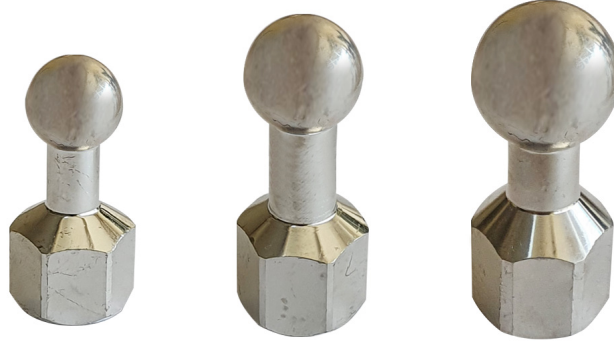


Code	Descriptions	Weight (gr)	Box pcs.
SBB2 A1	2 x 6,5x9mm ² Plastic brass holder	4	50
SBB2 A2	2 x 6,5x9mm ² Plastic brass holder	4	50
SBB2 A3	2 x 6,5x9mm ² Plastic brass holder	4	50

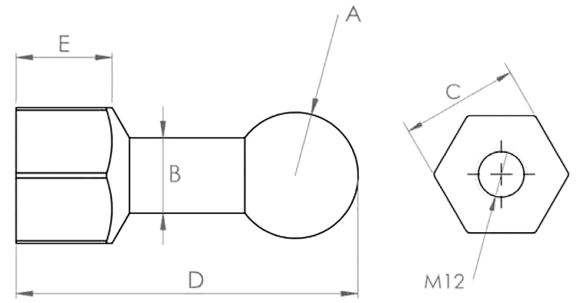
Code	Descriptions	Weight (gr)	Box pcs.
SBB1 A1	1x 6,5x9mm ² Plastic brass holder - Black	4	50
SBB1 A2	1x 6,5x9mm ² Plastic brass holder - Blue	4	50
SBB1 A3	1x 6,5x9mm ² Plastic brass holder - Green	4	50

OTR Series

Grounding Ball Studs

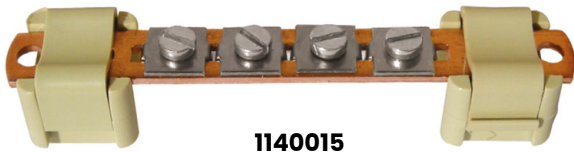
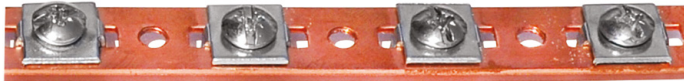


General Information			
Product Code	OTR 20	OTR 25	OTR 30
Product Name	Grounding Ball		
Description	Ø20, Ø25 and Ø30 Grounding ball		
Technical Information			
Material	Copper		
Surface	Tin Plated		
Dimensions	AA24 x 58,5	AA27 x 65,5	AA27 x 73
Product Name	130 gr.	213 gr	276 gr
Connection Type	M12 Bolt		
Package Information			
Package Dimensions	180 mm x 100 mm x 75 mm		
Pcs / Box	26 Pcs/Box	21 Pcs/Box	18 Pcs/Box
Package Weight	~3,4 kg	~4,5 kg	~5 kg

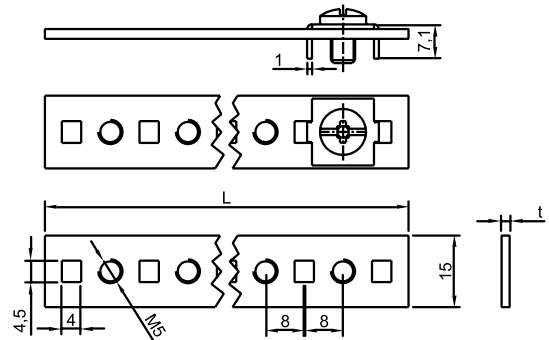


	OTR 20	OTR 25	OTR 30
A	Ø20	Ø25	Ø30
B	11	15	15
C	AA24	AA27	AA27
D	58,55	65,5	70,5
E	18	22	22

Neutral Grounded Busbar (Screw-On / Flat Copper)



1140015



Code	Descriptions		Current (A)	t (mm)	L (mm)	Pcs. Box
	Screws	Dia				
NGB1531	31	1.5 x 15 mm	100	1,50	1000	25
NGB1562	62	1.5 x 15 mm	100	1,50	1000	25
NGB2031	31	2 x 15 mm	125	2	1000	25
NGB2062	62	2 x 15 mm	125	2	1000	25
NGB3031	31	3 x 15 mm	150	2	1000	25
NGB3062	62	3 x 15 mm	150	2	1000	25
SBS	Busbar Support Suitable for 3x10 / 3x12 / 3x15 busbars					100

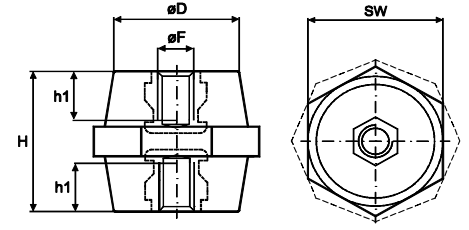
Note: Grey colour busbar support is available upon request.

Low Voltage Standoff Insulators

* Threads: steel zinc coated (upon request brass, stainless steel, 8.8 grade steel)

* Upon request: steel bolts

Note: Red colour available upon request.



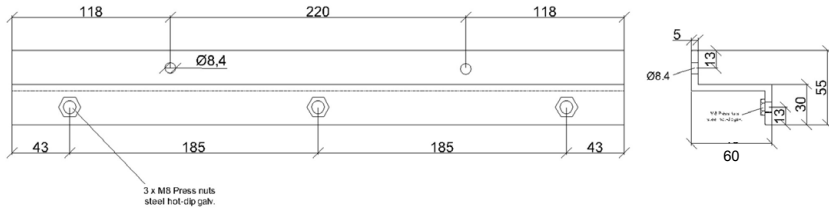
Part No.	Dimensions (mm)					Service Voltage ~kV	Test Voltage ~kV	Cantilever Strength kN	Tensile Strength kN	Max. Tightening Torque Nm	Torque Strength Nm	Weight kg/100 pcs.	Box Qty.
	H	øF	SW	øD	h1								
KSI-201706	20	M6	Hex 17	15	5	0,6	3	1	2	3	10	1.25	100
KSI-252205	25	M5	Hex 22	18	6	1	6	1	3	2.5	10	2.00	100
KSI-252206		M6			6								
KSI-303006	30	M6	Hex 30	26	6	1,5	10	3	6	12	20	5.40	80
KSI-303008		M8			8			3	7	20	40	5.30	
KSI-303010		M10			9			3	6	30	40	5.10	
KSI-304008	30	M8	Hex 40	36	9	1,5	10	5	9	20	50	8.50	100
KSI-353206	35	M6	Hex 32	28	8	1,5	12	4.5	8	12	20	7.00	100
KSI-353208		M8			10			5	8	20	50	7.20	
KSI-353210		M10			10			5	8	40	70	6.90	
KSI-353508	35	M8	Hex 35	30	10	1,5	12	5	6.5	20	50	7.80	100
KSI-353510		M10			10			5	7	40	75	8.00	
KSI-354006	35	M6	Hex 40	35	8	1,5	12	4.5	8	12	20	8.60	100
KSI-354008		M8			10			5	10	20	45	8.70	
KSI-354010		M10			10			5	7	40	75	8.80	
KSI-403006	40	M6	Hex 30	26	8	2	15	2	6	12	20	6.90	60
KSI-403008		M8			10			3	9	16	45	7.00	
KSI-403606	40	M6	Hex 36	32	8	2	15	4.5	6	12	20	10.60	100
KSI-403608		M8			10			5	8	20	45	10.20	
KSI-403610		M10			12			6	10	40	75	10.80	
KSI-404006	40	M6	Hex 40	35	8	2	15	4.5	6	12	20	10.20	75
KSI-404008		M8			10			5	11	20	50	10.70	
KSI-404010		M10			12			6	10	40	75	11.50	
KSI-404012		M12			11			7.5	11	40	90	11.80	
KSI-404610	40	M10	Hex 46	40	12	2	15	8	11	40	80	14.00	50
KSI-454608	45	M8	Hex 46	38	10	2	15	6	8	20	50	14.80	50
KSI-454610		M10			12			8	10	40	90	15.30	
KSI-454612		M12			15			8	11	40	100	16.00	
KSI-503606	50	M6	Hex 36	29	8	2	15	4	9	12	20	10.50	60
KSI-503608		M8			10			4.5	9	20	50	10.90	
KSI-503610		M10			14			4.5	9	40	75	12.20	
KSI-503612		M12			15			4.5	9	30	80	13.00	
KSI-504010	50	M10	Hex 40	28	14	2	15	5	13	40	80	14.00	50
KSI-505008	50	M8	Hex 50	42	10	2	15	6.5	11	20	50	18.50	50
KSI-505010		M10			14			7	15	40	90	19.00	
KSI-505012		M12			15			9	15	70	125	20.10	
KSI-604010	60	M10	Hex 40	35	14	3	20	4.5	20	40	90	16.20	50
KSI-605012	60	M12	Hex 50	42	18	3	15	8	20	70	140	26.00	32
KSI-605508	60	M8	Hex 55	43	15	3	15	6	15	20	50	28.00	50
KSI-605510		M10			14			7	18	40	90	28.20	
KSI-605512		M12			20			10	22	70	140	27.20	
KSI-634110	63	M10	Hex 41	31	15	3		6	15	40	90	16.00	50
KSI-754610	75	M10	Hex 46	36	17	3	20	4	16	40	90	23.10	9
KSI-754612		M12			20			7	12	70	125	25.00	
KSI-1006510	100	M10	Hex 65	52	18	5	26	8	30	40	100	66.00	
KSI-1006512		M12			18			9	30	70	140	64.80	
KSI-1006516		M16			24			11	30	95	190	63.10	

SMC Busbar Supports



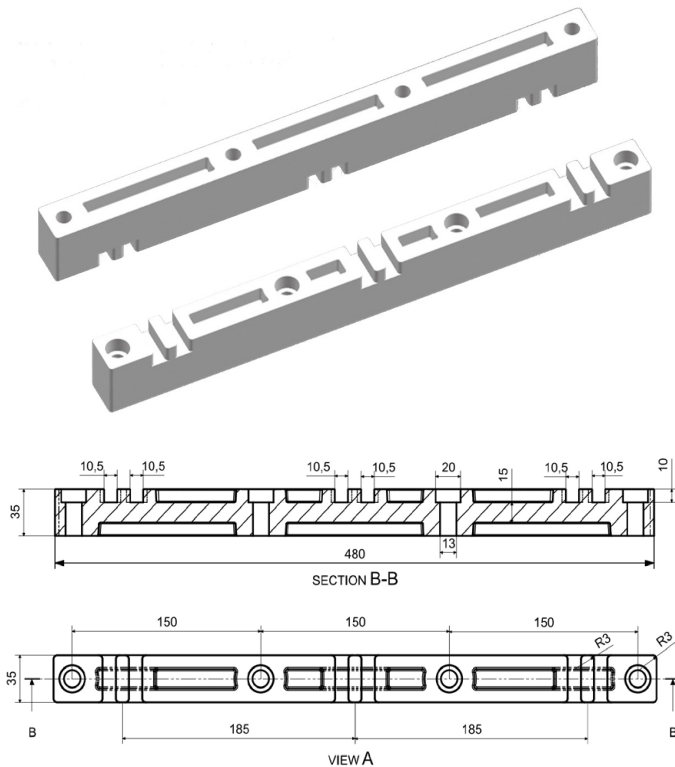
Properties

- Operational alternating current **1000 V**
- Continuous current exceeding **4000 A**
- Phase interval **185 mm**
- Colour: **RAL 7035**
- Nuts: **M8 Steel Zinc coated**
- Made from **GFRP - SMC**



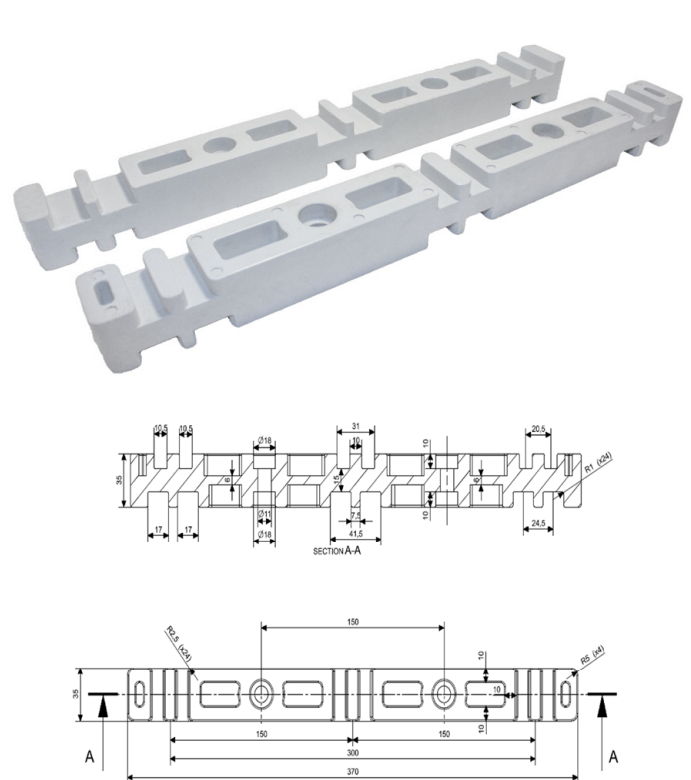
Code	Copper bars	Busbar system (mm) a	Icw (1s) (kA)
KZS-185	100x10	185	50
	80x10	185	50
	50x10	185	40
	30x10	185	30

SMC Busbar Supports



*Custom production is available upon request.

Code	Service Voltage ~ (V)	Phase Distance	Number and Thickness of Busbars	Weight kg / pc.	Box Qty.
KBS-185	1000	185 mm	2 x 10 mm	0.970	20 pcs.



Code	Service Voltage ~ (V)	Phase Distance	Number and Thickness of Busbars	Weight kg / pc.	Box Qty.
KBS-150	1000	150 mm	2 x 10 mm 2x16,5 mm	0.572	20 pcs.

Fiberglass Plates



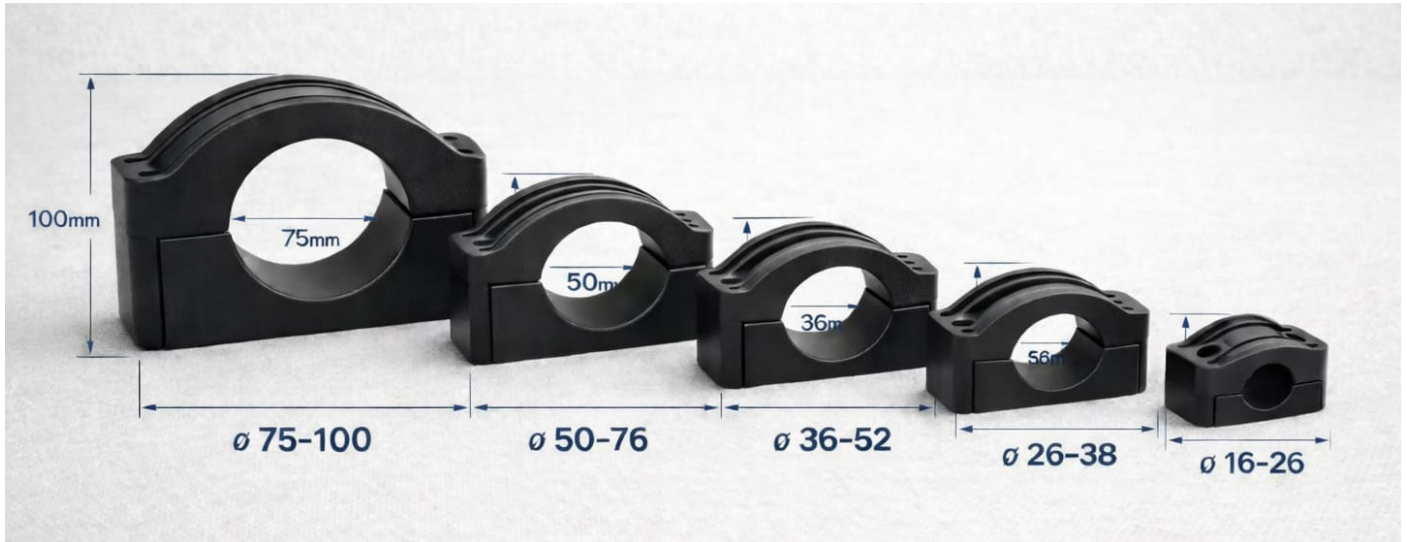
Glass mat and unsaturated polyester resin bulk, special laminated halogen-free UPGM 203 is used for many kinds of both electrical and mechanical applications. Due to its excellent mechanical and thermal qualities it is used in electrical switchboards, transformers and many more, where a Class F material is a must. The product complies with UL94 flame resistance test to V0, as well as having a tracking test. UPGM 203 can be manufactured with both SMC and Hand Lay-up method.

* Custom production is available upon request



Code	Descriptions	Size (mm)		
		Thickness	W	H
FGP038001200	Fiber Glass Polyester Plate	3	800	1200
FGP058001200		5	800	1200
FGP108001200		10	800	1200
FGP158001000		15	800	1200
FGP208001200		20	800	1200
FGP258001200		25	800	1200
FGP308001200		30	800	1200
FGP030301200	Fiber Glass Polyester Wedge	3	30	1200
FGP030401200		3	40	1200
FGP030501200		3	50	1200
FGP030601200		3	60	1200
FGP050301200	Fiber Glass Polyester Wedge	5	30	1200
FGP050401200		5	40	1200
FGP050501200		5	50	1200
FGP050601200		5	60	1200
FGP100301200	Fiber Glass Polyester Wedge	10	30	1200
FGP100401200		10	40	1200
FGP100501200		10	50	1200
FGP100601200		10	60	1200
FGP150301200	Fiber Glass Polyester Wedge	15	30	1200
FGP150401200		15	40	1200
FGP150501200		15	50	1200
FGP150601200		15	60	1200
FGP200301200	Fiber Glass Polyester Wedge	20	30	1200
FGP200401200		20	40	1200
FGP200501200		20	50	1200
FGP200601200		20	60	1200
FGP250301200	Fiber Glass Polyester Wedge	25	30	1200
FGP250401200		25	40	1200
FGP250501200		25	50	1200
FGP250601200		25	60	1200
FGP300301200	Fiber Glass Polyester Wedge	30	30	1200
FGP300401200		30	40	1200
FGP300501200		30	50	1200
FGP300601200		30	60	1200

Medium Voltage Cable Holder

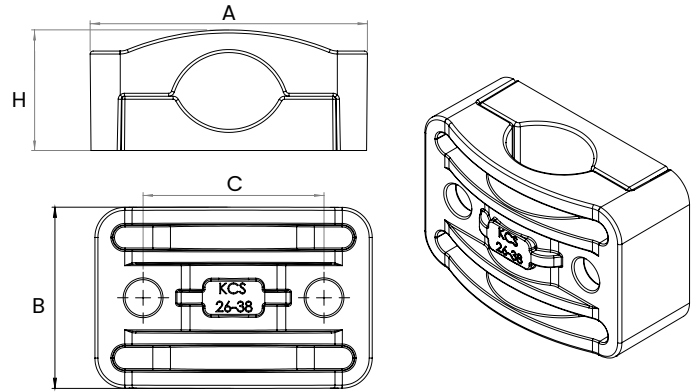


* Our tested cable cleats in accordance with the Standard IEC 61914:2015 are suitable against high short circuit levels.

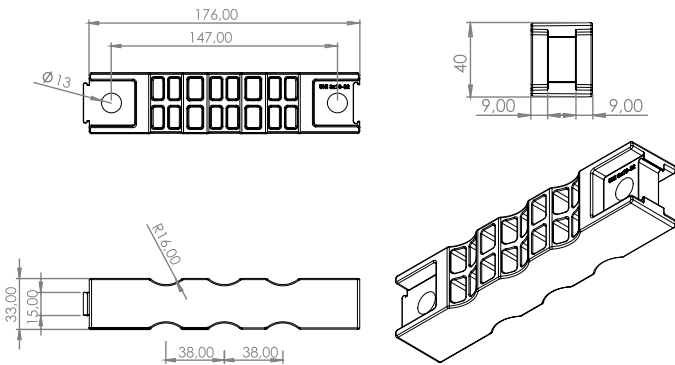
* Glass fibre reinforced polyamide, fire resistant, high UV and chemical resistance, halogen-free and fully recyclable.

Custom production is available upon request

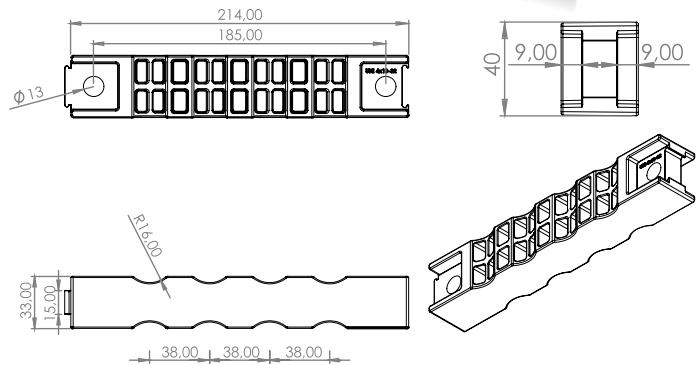
Code	Description	Box Qty.	Dimensions (AxBxCxH)
KCS 16-26	16 - 26 MV Cable Holder	240	77x37x45x49
KCS 26-38	26 - 38 MV Cable Holder	140	92x60x60x40
KCS 36-52	36 - 52 MV Cable Holder	100	105x60x75x54
KCS 50-76	50 - 76 MV Cable Holder	60	126x60x95x71
KCS 75-100	75 - 100 MV Cable Holder	20	200x80x150x102



KCS UNI 3*13-32



KCS UNI 4*13-32



Code	Description	Box Qty.
KCS UNI 3*13-32	3*13 - 32 MV Cable Holder	25
KCS UNI 4*13-32	4*13 - 32 MV Cable Holder	20

Cable Duct Cutter

- Flat and 45° angle cutting,
- Cutting without burr,
- Cutting without wastage,
- Ruler for easier set



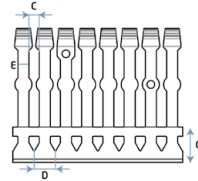
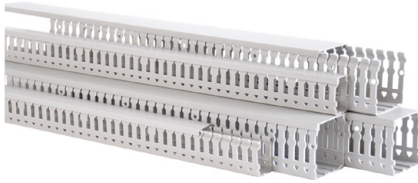
Product Code	KKM2
Cutting Type	Flat and 45° Degree
Maximum Width	125 mm
Lenght Stop	50 cm
Weight	~9 Kg
Dimensions	15 x 83 x 90 cm

- Flat cutting,
- Cutting without burr,
- Cutting without wastage,
- Ruler for easier setting.



Product Code	KKM1
Cutting Type	Flat
Maximum Width	125 mm
Lenght Stop	50 cm
Weight	~7 Kg
Dimensions	10 x 80 x 85 cm

Cable Ducts



CE RoHS UL RAL 7030 , UL 94-V0 , IEC60695-2-1 EN50085-2-3

Code	Dimensions WxH (mm)	C (mm)	D (mm)	E (mm)	G (mm)	Pack (Pcs)
KCT 2525G	25x25 Wiring Ducts	6	12,5	6	11	60*2m
KCT 2540G	25x40 Wiring Ducts	6	12,5	6	13,5	50*2m
KCT 2560G	25x60 Wiring Ducts	6	12,5	6	17,2	30*2m
KCT 2580G	25x80 Wiring Ducts	6	12,5	6	16,5	24*2m
KCT 2510G	25x100 Wiring Ducts	6	12,5	6	21	16*2m
KCT 4025G	40x25 Wiring Ducts	6	12,5	6	11	40*2m
KCT 4040G	40x40 Wiring Ducts	6	12,5	6	14,9	26*2m
KCT 4060G	40x60 Wiring Ducts	6	12,5	6	15,6	18*2m
KCT 4080G	40x80 Wiring Ducts	6	12,5	6	19	24*2m
KCT 4010G	40x100 Wiring Ducts	6	12,5	6	20,9	20*2m
KCT 6040G	60x40 Wiring Ducts	6	12,5	6	13,5	18*2m
KCT 6060G	60x60 Wiring Ducts	6	12,5	6	17,4	24*2m
KCT 6080G	60x80 Wiring Ducts	6	12,5	6	19	18*2m
KCT 6010G	60x100 Wiring Ducts	6	12,5	6	21	12*2m
KCT 8040G	80x40 Wiring Ducts	6	12,5	6	15,3	24*2m
KCT 8060G	80x60 Wiring Ducts	6	12,5	6	17,4	16*2m
KCT 8080G	80x80 Wiring Ducts	6	12,5	6	20,8	12*2m
KCT 8010G	80x100 Wiring Ducts	6	12,5	6	21,2	8*2m
KCT 1060G	100x60 Wiring Ducts	6	12,5	6	17,6	12*2m
KCT 1080G	100x80 Wiring Ducts	6	12,5	6	21	10*2m
KCT 1010G	100x100 Wiring Ducts	6	12,5	6	21,2	8*2m
KCT 1260G	120x60 Wiring Ducts	6	12,5	6	17,6	8*2m
KCT 1280G	120x80 Wiring Ducts	6	12,5	6	21	8*2m
KCT 1210G	120x100 Wiring Ducts	6	12,5	6	21,2	8*2m

DIN Rail Cutter and Punching Tools

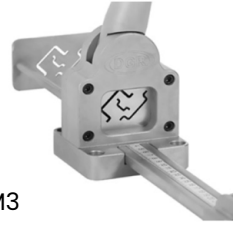
- 4 different types of slot cutting,
- Punching,
- Cutting without wastage and burr,
- Unblunt blade,
- Ruler for easier setting,
- Profile cutting according to customer's specifications.



KRM4

Product Code	KRM4
Cutting Thickness	1,5 mm
Cutting Capacity	Rail 7,5x35 Copper 3x30 mm Rail 15x35 Tie rod Ø8 mm
Punching	Ø5 mm
Lenght Stop	50 cm
Weight	~10 Kg
Dimensions	13 x 85 x 90 cm

- Cutting without wastage and burr,
- Unblunt blade,
- Ruler for easier setting,
- Profile cutting according to customer's specifications.



KRM3

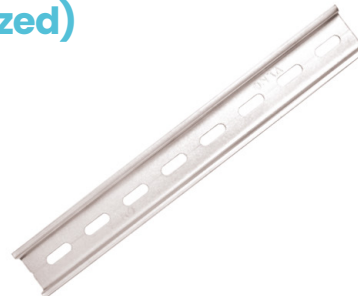
Product Code	KRM3
Cutting Thickness	1,5 mm
Cutting Capacity	Rail 5,5x15 Rail 7,5x35 Rail 15x35
Lenght Stop	50 cm
Weight	~8 Kg
Dimensions	10 x 85 x 90 cm

35x15 mm Slotted Mounting DIN Rails (Galvanized)



Code	Dimensions	PCS/BOX
KDR-35150	2 m	25

35x7,5 mm Slotted Mounting DIN Rails (Galvanized)



Code	Dimensions	PCS/BOX
KDR-35075	2 m	50

Flexible Braided Bars (Tin Plated)



Customize production is available upon request.

Cover Stay



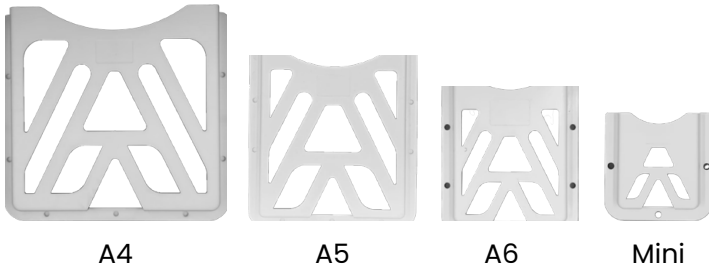
- Cover Stay with automatic lock to keep the door open
- LH and RH application is possible

Applications

Electric panels, machinery covers

Code	Material	Surface
PMI	Steel	Zinc plated

Panel Project Pocket



A4

A5

A6

Mini

Code	Description	Material	Colour	Box
EA CP-A4	A4 Drawing Pocket	ABS	RAL7035	100
EA CP-A5	A5 Drawing Pocket	ABS	RAL7035	200
EA CP-A6	A6 Drawing Pocket	ABS	RAL7035	200
EA CP-Mini	Mini Drawing Pocket	ABS	RAL7035	250

Cable Collector

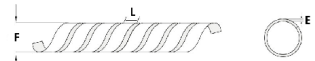
Helezon Cable Collect Spirals



50 cm



Roll 10 Mt

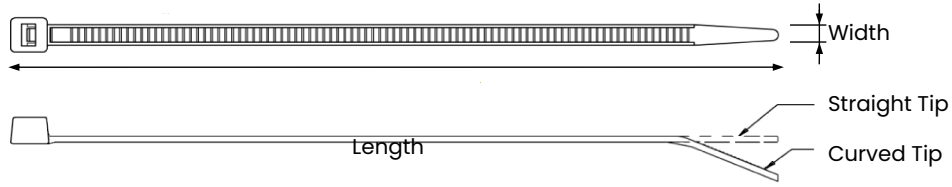


Code	Product Name	Cable Diamente (mm ²)	Dimensions			Spool (mt)
			F	E	L	
HCS-01	No: 1 (Size: 50 cm)	2,5 x 15 mm	6	0.60	7.4	100
HCS-02	No: 2 (Size: 50 cm)	6 x 30 mm	8	0.75	12.0	100
HCS-03	No: 3 (Size: 50 cm)	7,5 x 30 mm	10	0.80	12.3	100
HCS-04	No: 4 (Size: 50 cm)	9 x 32 mm	12	0.85	15.0	100
HCS-05	No: 5 (Size: 50 cm)	12 x 35 mm	15	1.00	15.5	100

Code	Product Name	Cable Diamente (mm ²)	Dimensions			Spool (mt)
			F	E	L	
HCSR-01	No: 1 (Size: 10 m)	2,5 x 15 mm	6	0.60	7.4	10
HCSR-02	No: 2 (Size: 10 m)	6 x 30 mm	8	0.75	12.0	10
HCSR-03	No: 3 (Size: 10 m)	7,5 x 30 mm	10	0.80	12.3	10
HCSR-04	No: 4 (Size: 10 m)	9 x 32 mm	12	0.85	15.0	10
HCSR-05	No: 5 (Size: 10 m)	12 x 35 mm	15	1.00	15.5	10

Black colour is available upon request.

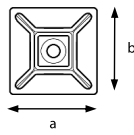
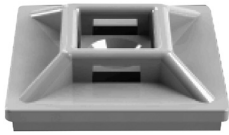
Cable Tie



Different colour production is available upon request.

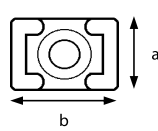
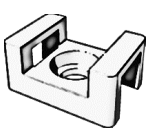
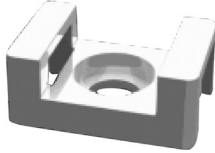
Part No.	Width (mm)	Length (mm)	Max. Bundle Dia (mm)	Min. Tensile Strength (kg)	Box Size (cm)	Pack. Qty. (Bag)	Box Weight (kg)	Packaging Qty. (Ctn)
KKB-25100	2,5	100	22	12	60 x 40 x 40	1.000	23	80.000
KKB-25140	2,5	140	35	12	60 x 40 x 40	100	24	50.000
KKB-25200	2,5	200	54	12	60 x 40 x 40	100	24	35.000
KKB-36100	3,6	100	21	18	60 x 40 x 40	250	25	50.000
KKB-36150	3,6	150	36	18	60 x 40 x 40	100	24	30.000
KKB-36205	3,6	205	54	18	60 x 40 x 40	100	30	25.000
KKB-36250	3,6	250	68	18	60 x 40 x 40	100	29	22.500
KKB-36300	3,6	300	81	18	60 x 40 x 40	100	29	17.500
KKB-36370	3,6	370	102	18	60 x 40 x 40	100	32	16.000
KKB-48200	4,8	200	50	25	60 x 40 x 40	100	28	17.000
KKB-48250	4,8	250	63	25	60 x 40 x 40	100	30	15.000
KKB-48300	4,8	300	80	25	60 x 40 x 40	100	28	15.000
KKB-48350	4,8	350	98	25	60 x 40 x 40	100	32	12.000
KKB-48400	4,8	400	109	25	60 x 40 x 40	100	31	10.000
KKB-48450	4,8	450	125	25	60 x 40 x 40	100	38	9.000
KKB-8250	8	250	62	55	60 x 40 x 40	100	30	8.000
KKB-8300	8	300	75	55	60 x 40 x 40	100	29	6.000
KKB-8380	8	380	105	55	60 x 40 x 40	100	31	6.000
KKB-8450	8	450	124	55	60 x 40 x 40	100	36	4.500
KKB-8550	8	550	160	55	60 x 40 x 40	100	37	4.000
KKB-8750	8	750	220	55	85 x 35 x 24	100	26	2.000
KKB-9762	9	762	225	80	85 x 35 x 24	100	23	1.500
KKB-9940	9	940	290	80	105x35x24	100	29	1.500

Cable Tie Mounts (Self Adhesive & Screwed)



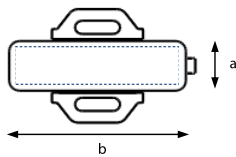
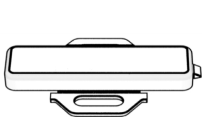
Part No.	a (mm)	b (mm)	Mount. Hole Dia (mm)	Max. Tie Width (mm)	Packaging Qty. (Bag)	Packaging Qty. (Ctn.)
KBA-001	20	20	Ø 3,2	3,6	100	25.000
KBA-002	28	28	Ø 4,3	4,8	100	12.500

Screwed Tie Mounts



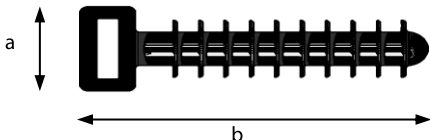
Part No.	a (mm)	b (mm)	Mount. Hole Dia (mm)	Max. Tie Width (mm)	Packaging Qty. (Bag)	Packaging Qty. (Ctn.)
KBA-003	10	17	Ø 3,7	4,8	250	40.000
KBA-004	17	23	Ø 6,5	8	250	15.000

Cable Tie Marker



Part No.	a (mm)	b (mm)	Mount. Area Width (mm)	Mount. Area Length (mm)	Max. Tie Width (mm)	Packaging Qty. (Bag)	Packaging Qty. (Ctn.)
KBA-005	10	35	7	32	8	100	12.500
KBA-006	20	45	17	42	8	100	6.000

Concrete Crocket



Part No.	a (mm)	b (mm)	Mount. Hole Dia (mm)	Max. Tie Width (mm)	Packaging Qty. (Bag)	Packaging Qty. (Ctn.)
KBA-007	13,2	42,8	Ø 8	8	250	12.500

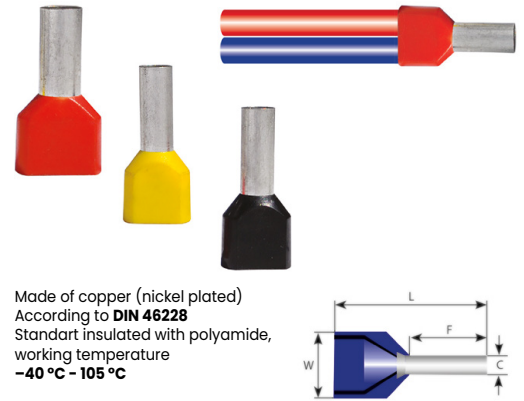
Insulated Cord End Terminal DIN Norm 46228

French Norm	Code	Cable Cross Section (mm ²)	F	L	C	W	Pcs/Box
ST	TIY 0.30	0,34	8,0	12,0	0,80	1,9	1.000
ST	TIY 0.50	0,50	8,0	14,0	1,00	2,6	1.000
ST	TIY 0.75	0,75	8,0	14,0	1,20	2,8	1.000
ST	TIY 1.0	1,00	8,0	14,0	1,40	3,0	1.000
ST	TIY 1.5	1,50	8,0	14,0	1,70	3,5	500
ST	TIY 2.5	2,50	8,0	14,0	2,20	4,2	500
ST	TIY 4.0	4,00	10,0	17,0	2,80	4,8	200
ST	TIY 6.0	6,00	12,0	20,0	3,50	6,3	200
ST	TIY 10	10	12,0	22,0	4,50	7,6	100
ST	TIY 16	16	12,0	24,0	5,80	8,8	100
ST	TIY 25	25	16,0	30,0	7,30	11,2	50
ST	TIY 35	35	16,0	30,0	8,30	12,7	50
ST	TIY 50	50	20,0	36,0	10,30	15,0	25
ST	TIY 70	70	21,0	37,0	13,50	16,0	10



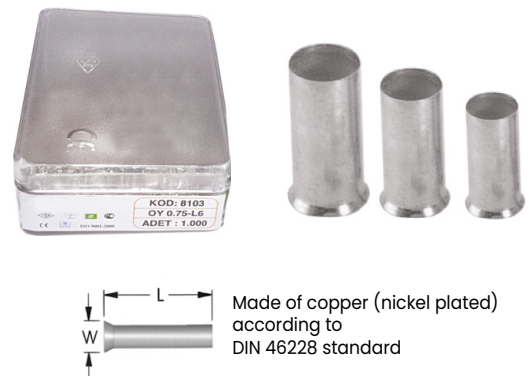
Insulated Twin Cord End Terminal DIN Norm 46228

French Norm	Code	Cable Cross Section (mm ²)	F	L	C	W	Pcs/Box
ST	TCY 0.50	2 x 0,50	8,0	15,0	1,5	2,5 / 4,7	500
ST	TCY 0.75	2 x 0,75	0,8	15,0	1,8	2,8 / 5,0	500
ST	TCY 1.0	2 x 1,0	8,0	15,0	2,05	3,4 / 5,4	500
ST	TCY 1.5	2 x 1,0	10,0	17,0	2,05	3,4 / 5,4	500
ST	TCY 2.5	2 x 2,5	10,0	18,5	2,8	4,2 / 7,8	250
ST	TCY 4.0	2 x 4,0	12,0	23,0	3,7	4,9 / 8,8	100
ST	TCY 6.0	2 x 6,0	14,0	26,0	4,8	6,9 / 10,0	100
ST	TCY 10.0	2 x 10,0	14,0	26,5	6,4	7,6 / 12,8	50
ST	TCY 16.0	2 x 16,0	14,0	31,5	8,3	9,6 / 18,6	50



Non-Insulated Cord End Terminal DIN Norm 46228

Code	W (mm ²)	L	Pcs/Box
TKY 0.50	0.50	8	2000
TKY 0.75	0.75	8	2000
TKY 1.0	1.0	8	2000
TKY 1.5	1.5	8	2000
TKY 2.5	2.5	8	2000
TKY 4.0	4.0	10	1000
TKY 6.0	6.0	10	500
TKY 10	10	12	200
TKY 16	16	12	200
TKY 25	25	13	100
TKY 35	35	13	100

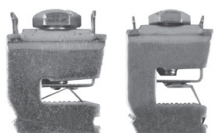


16 mm² Connection Terminals For Cu - Busbars (Spring)

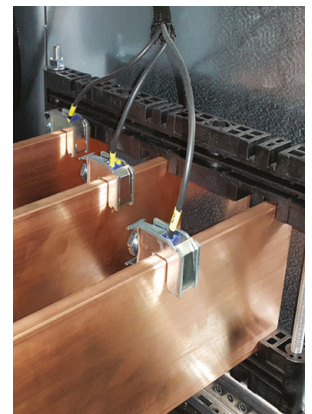


CODE	DESCRIPTIONS	BOX PCS
KCT-1605	SK16 F 5 Connection Terminals For Cu Bar 1.5 - 16 mm ²	40
KCT-1610	SK16 F 10 Connection Terminals For Cu Bar 1.5 - 16 mm ²	40

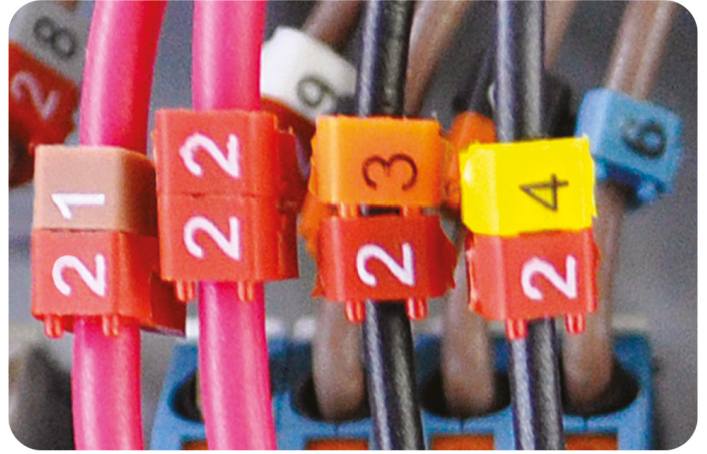
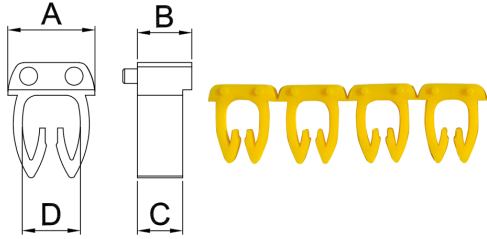
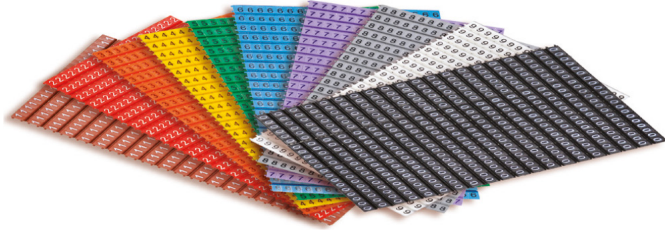
35 mm² Connection Terminals For Cu - Busbars (Spring)



CODE	DESCRIPTIONS	BOX PCS
KCT-3505	SK35 F 5 Connection Terminals For Cu Bar 1.5 - 35 mm ²	35
KCT-3510	SK35 F 10 Connection Terminals For Cu Bar 1.5 - 35 mm ²	35



KCG Type Cable Marker



Suitable with other brands.

Dimensions (mm)	No	A	B	C	D
	1	4,4	3	2,5	2,7
	2	5	3	2,5	3,2
	3	7,4	3	2,5	4,9

Technical Data

Material	PA6.6
Temperature	-40 C, +140 C
Press Color	Black & White
Cable Section	No1 : 0,75 - 1,5 mm ² No2 : 1,50 - 2,50 mm ² No3 : 4,00 - 6,00 mm ²

NO:1		0,75 - 1,50 mm ²
Code	Descriptions	Box
KCM 1.00	0 PRINTED	400/20.000
KCM 1.01	1 PRINTED	400/20.000
KCM 1.02	2 PRINTED	400/20.000
KCM 1.03	3 PRINTED	400/20.000
KCM 1.04	4 PRINTED	400/20.000
KCM 1.05	5 PRINTED	400/20.000
KCM 1.06	6 PRINTED	400/20.000
KCM 1.07	7 PRINTED	400/20.000
KCM 1.08	8 PRINTED	400/20.000
KCM 1.09	9 PRINTED	400/20.000
KCM 1.10	A PRINTED	400/20.000
KCM 1.11	B PRINTED	400/20.000
KCM 1.12	C PRINTED	400/20.000
KCM 1.13	N PRINTED	400/20.000
KCM 1.14	L PRINTED	400/20.000
KCM 1.15	⊥ PRINTED	400/20.000

NO:2		1,50 - 2,50 mm ²
CODE	DESCRIPTIONS	BOX
KCM 2.00	0 PRINTED	400/20.000
KCM 2.01	1 PRINTED	400/20.000
KCM 2.02	2 PRINTED	400/20.000
KCM 2.03	3 PRINTED	400/20.000
KCM 2.04	4 PRINTED	400/20.000
KCM 2.05	5 PRINTED	400/20.000
KCM 2.06	6 PRINTED	400/20.000
KCM 2.07	7 PRINTED	400/20.000
KCM 2.08	8 PRINTED	400/20.000
KCM 2.09	9 PRINTED	400/20.000
KCM 2.10	A PRINTED	400/20.000
KCM 2.11	B PRINTED	400/20.000
KCM 2.12	C PRINTED	400/20.000
KCM 2.13	N PRINTED	400/20.000
KCM 2.14	L PRINTED	400/20.000
KCM 2.15	⊥ PRINTED	400/20.000

NO:3		4,00 - 6,00 mm ²
CODE	DESCRIPTIONS	BOX
KCM 3.00	0 PRINTED	400/20.000
KCM 3.01	1 PRINTED	400/20.000
KCM 3.02	2 PRINTED	400/20.000
KCM 3.03	3 PRINTED	400/20.000
KCM 3.04	4 PRINTED	400/20.000
KCM 3.05	5 PRINTED	400/20.000
KCM 3.06	6 PRINTED	400/20.000
KCM 3.07	7 PRINTED	400/20.000
KCM 3.08	8 PRINTED	400/20.000
KCM 3.09	9 PRINTED	400/20.000
KCM 3.10	A PRINTED	400/20.000
KCM 3.11	B PRINTED	400/20.000
KCM 3.12	C PRINTED	400/20.000
KCM 3.13	N PRINTED	400/20.000
KCM 3.14	L PRINTED	400/20.000
KCM 3.15	⊥ PRINTED	400/20.000

Headquarters

Güzeller OSB Galvano Koop 2/20
Gebze / Kocaeli / Türkiye
+90 262 502 02 64
koral@koral.com.tr

Branch Office

Andrejostas 17, Riga, LV-1045,
Latvia
+37 123 204 550
export@koral.com.tr

koral.com.tr



Issue date: 01.03.2026

